

## 45-1016: Rabbit Polyclonal Antibody to HAT-tag(Discontinued)

<b>Clonality :</b>	Polyclonal
<b>Application :</b>	ELISA
<b>Format :</b>	Purified
<b>Isotype :</b>	Rabbit IgG
<b>Immunogen Information :</b>	HAT epitope tag peptide KDHLIHNVHKEFHAAHANK conjugated to KLH

### Product Info

<b>Amount :</b>	100 µg
<b>Purification :</b>	Immunoaffinity chromatography
<b>Content :</b>	0.5 mg/ml, lyophilized with PBS, pH 7.4, containing 0.02% sodium azide
<b>Storage condition :</b>	The antibody is stable in lyophilized form if stored at -20°C or below. The reconstituted antibody can be stored for 2-3 weeks at 2-8°C. For long term storage, aliquot and store at -20°C or below. Avoid repeated freezing and thawing cycles.

### Application Note

**ELISA:** 1:5,000-1:2,000

**Western blot:** 1-2 µg/ml

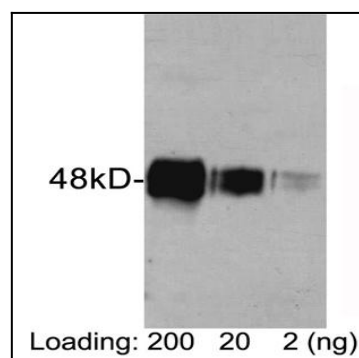


Figure-1 : Western blot analysis of HAT-tag Antibody at 0.5 µg/ml on HAT-tagged fusion protein (200, 20 & 2 ng) expressed in E. coli cell lysate.

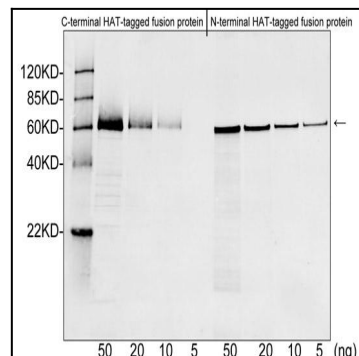


Figure-2 : Western blot analysis of HAT-tag Antibody at 1 µg/ml on C-terminal (Left) & N-terminal (Right) of HAT tagged fusion protein (50, 20, 10 & 5 ng) expressed in E. coli cell lysate. IRDye 800 Conjugated Goat Anti-Rabbit IgG was used as Secondary Antibody.