

10-4054: Monoclonal Antibody to CLEC1 (Clone: ABM2H82)

| | |
|--------------------------------|--|
| Clonality : | Monoclonal |
| Clone Name : | ABM2H82 |
| Application : | FACS |
| Reactivity : | Human |
| Gene : | CLEC1A |
| Gene ID : | 51267 |
| Uniprot ID : | Q8NC01 |
| Format : | Purified |
| Alternative Name : | C-type lectin-like receptor 1, CLEC1A |
| Isotype : | Mouse IgG2b Kappa |
| Immunogen Information : | A partial length recombinant CLEC1 protein (amino acids 55-280) was used as the immunogen for this antibody. |

Description

CLEC1A (C-type lectin domain family 1, member A) is a 31 kDa protein belonging to the C-type lectin/C-type lectin-like domain (CTL/CTLD) superfamily. CLEC1A functions as a transmembrane signaling receptor, and selectively and non-covalently interacts with carbohydrates. Members of this family have common protein fold and have diverse functions, such as cell adhesion, cell-cell signaling, glycoprotein turnover and have a role in inflammation and immune response. CLEC1A plays important role in regulating dendritic cell function. CLEC1A is expressed preferentially in dendritic cells.

Product Info

| | |
|----------------------------|---|
| Amount : | 25 µg / 100 µg |
| Purification : | Protein G Chromatography |
| Content : | 25 µg in 50 µl/100 µg in 200 µl PBS containing 0.05% BSA and 0.05% sodium azide. Sodium azide is highly toxic. |
| Storage condition : | Store the antibody at 4°C, stable for 6 months. For long-term storage, store at -20°C. Avoid repeated freeze and thaw cycles. |

Application Note

FlowCytometry: 0.5-1 µg/10⁶ Cells

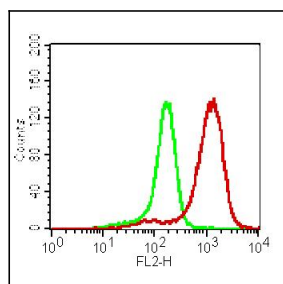


Figure-1: Cell surface flowcytometry analysis of CLEC1 on human PBMC (Monocytes) using 0.5 µg/10⁶ Cells of Anti-CLEC1 antibody (Clone: ABM2H82). Green represent isotype control and red represent Anti human CLEC1 antibody (Abeomics 10-4054). Goat anti mouse PE conjugated was used as the secondary antibody.