

## 10-7529-F: Monoclonal Antibody to CD31 (ABM3E63) FITC Conjugated

<b>Clonality :</b>	Monoclonal
<b>Clone Name :</b>	ABM3E63
<b>Application :</b>	FACS
<b>Reactivity :</b>	Human
<b>Conjugate :</b>	FITC
<b>Gene :</b>	PECAM1
<b>Gene ID :</b>	5175
<b>Uniprot ID :</b>	P16284
<b>Format :</b>	Purified
<b>Alternative Name :</b>	PECAM1
<b>Isotype :</b>	Mouse IgG1 Kappa
<b>Immunogen Information :</b>	Human spleen membranes from a patient with hairy cell leukemia was used as immunogen to generate the CD31 (PECAM-1) antibody.

### Description

CD31 (PECAM-1) is a transmembrane glycoprotein member of the immunoglobulin supergene family of adhesion molecules, and plays key roles in leukocyte migration, angiogenesis, and integrin activation. CD31 is expressed on endothelial and hematopoietic (platelets, monocytes, macrophages, granulocytes, T and B lymphocytes, dendritic, bone marrow stem and adult) cells.

### Product Info

<b>Amount :</b>	100 µg
<b>Purification :</b>	Protein G Chromatography
<b>Content :</b>	25 µg in 125 µl/100 µg in 500 µl Tris and 0.05% sodium azide. Sodium azide is highly toxic.
<b>Storage condition :</b>	Store the antibody at 4°C; stable for 6 months.

### Application Note

FACS: 0.5µg/10<sup>6</sup> cells

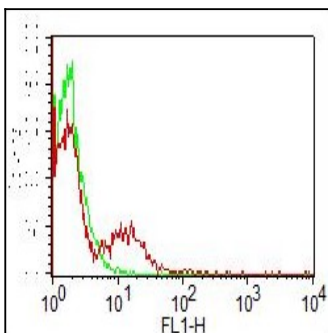


Fig.1: FLOW Cytometry analysis of CD31FITC in human PBMC using 0.2µg antibody per 10<sup>6</sup> cells. Green represents isotype control. Red represents FITC conjugated anti-CD31 antibody (Clone: ABM3E63).