

36-1519: Monoclonal Antibody to NKX2.2 (Neuroendocrine & Ewing's Sarcoma Marker)(Clone : NX2/294)

| | |
|--------------------------------|--|
| Clonality : | Monoclonal |
| Clone Name : | NX2/294 |
| Application : | FACS,IF,IHC |
| Reactivity : | Mouse, Human |
| Gene : | NKX2-2 |
| Gene ID : | 4821 |
| Uniprot ID : | O95096 |
| Format : | Purified |
| Alternative Name : | NKX2-2,NKX2.2,NKX2B |
| Isotype : | Mouse IgG2b, kappa |
| Immunogen Information : | Human full-length recombinant NKX2.2 protein |

Description

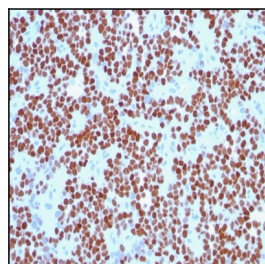
Expression of NKX2.2 has been found in neuroendocrine tumors of the gut, making it a potential marker for the study of gastrointestinal neuroendocrine tumors. More recently, NKX2.2 protein was identified as a target of EWS-FLI-1, the fusion protein specific to Ewing sarcoma, and was shown to be differentially upregulated in Ewing sarcoma on the basis of array-based gene expression analysis. It acts as a valuable marker for Ewing sarcoma, with a sensitivity of 93% and a specificity of 89%, and aids in the differential diagnosis of small round cell tumors.

Product Info

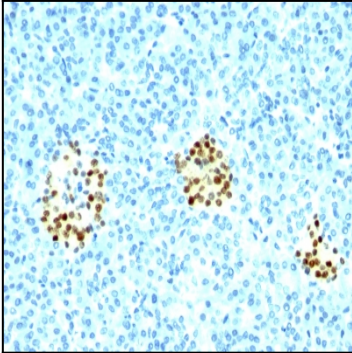
| | |
|----------------------------|---|
| Amount : | 100 µg |
| Purification : | Affinity Chromatography |
| Content : | 100 µg in 500 µl PBS containing 0.05% BSA and 0.05% sodium azide. Sodium azide is highly toxic. |
| Storage condition : | Store the antibody at 4°C; stable for 6 months. For long-term storage; store at -20°C. Avoid repeated freeze and thaw cycles. |

Application Note

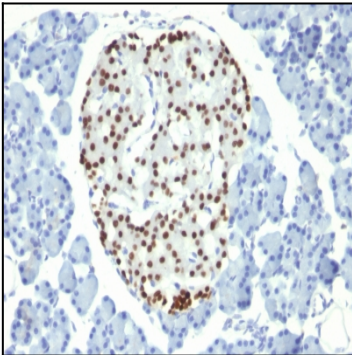
Flow Cytometry (1-2ug/million cells); Immunofluorescence (1-2ug/ml); Immunohistochemistry (Formalin-fixed) (1-2ug/ml for 30 minutes at RT)(Staining of formalin-fixed tissues requires heating tissue sections in 10mM Tris with 1mM EDTA, pH 9.0, for 45 min at 95°C followed by cooling at RT for 20 minutes);



Formalin-fixed, paraffin-embedded human Ewing's Sarcoma stained with NKX2.2 Monoclonal Antibody (NX2/294).



Formalin-fixed, paraffin-embedded human Pancreas stained with NKX2.2 Monoclonal Antibody (NX2/294).



Formalin-fixed, paraffin-embedded Rat Pancreas stained with NKX2.2 Monoclonal Antibody (NX2/294).