

32-7760: Recombinant Human Ribonuclease Pancreatic/RNASE1 (C-6His)

Gene : RNASE1

Gene ID : 6035

Uniprot ID : P07998

Description

Source: Human Cells.

MW :15.6kD.

Recombinant Human Ribonuclease Pancreatic is produced by our Mammalian expression system and the target gene encoding Lys29-Thr156 is expressed with a 6His tag at the C-terminus. Ribonuclease Pancreatic is a secreted enzyme that belongs to the pancreatic ribonuclease family. RNASE1 is an endonuclease that cleaves internal phosphodiester RNA bonds on the 3'-side of pyrimidine bases. RNASE1 prefers poly(C) as a substrate and hydrolyzes 2',3'-cyclic nucleotides, with a pH optimum near 8.0. RNASE1 acts on single stranded and double stranded RNA.

Product Info

Amount : 10 µg / 50 µg

Content : Supplied as a 0.2 µm filtered solution of 20mM PB, 150mM NaCl, 10% Glycerol, pH 7.4.

Storage condition : Store at -20°C, stable for 6 months after receipt. Please minimize freeze-thaw cycles.

Amino Acid : KESRAKKFQRQHMDSDSSPSSSSTYCNQMMRRRNMTQGRCKPVNTFVHEPLVDVQNVCFQEKVTCCKNGQG
NCYKSNSMHTDCRLTNGSRYPNCAYRTSPKERHIIIVACEGSPYVPVHFVDFASVEDSTVDHHHHHH

Application Note

Endotoxin : Less than 0.1 ng/µg (1 IEU/µg) as determined by LAL test.

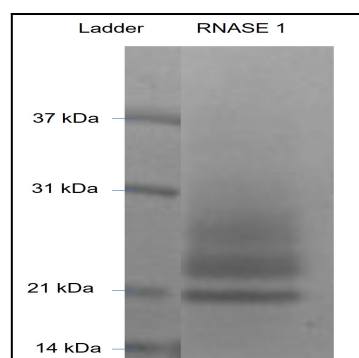


Figure: Coomassie gel staining. RNASE1 (10 µg) was loaded in 4-20% SDS Page gel in reducing condition.