

## 36-1487: Monoclonal Antibody to Smooth Muscle Myosin Heavy Chain (SM-MHC) (Leiomyosarcoma & Myoepithelial Cell Marker)

<b>Clonality :</b>	Monoclonal
<b>Clone Name :</b>	MYH11/923 + SMMS-1
<b>Application :</b>	FACS,IF,IHC
<b>Reactivity :</b>	Human, Rat
<b>Gene :</b>	MYH11
<b>Gene ID :</b>	4629
<b>Uniprot ID :</b>	P35749
<b>Format :</b>	Purified
<b>Alternative Name :</b>	MYH11,KIAA0866
<b>Isotype :</b>	Mouse IgG1, kappa + Mouse IgG1, kappa
<b>Immunogen Information :</b>	Recombinant human MYH11 protein (MYH11/923); Human uterus extract (SMMS-1)

### Description

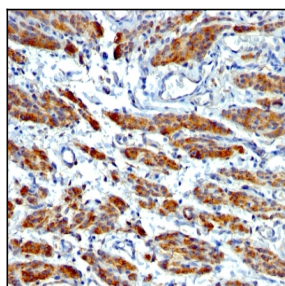
Smooth muscle myosin heavy chain (SM-MHC) is a cytoplasmic structural protein, which is a major component of the contractile apparatus in smooth muscle cells. Expression of smooth muscle myosin is developmentally regulated, appearing early in smooth muscle development, and is specific for smooth muscle development. Two isoforms of smooth muscle myosin heavy chain have been identified, designated MHC-1 and MHC-2. The antibody may be useful for the study of breast tumors as the presence of an intact layer of myoepithelial cells is an important feature, which may distinguish benign breast lesions and carcinoma in situ from invasive tumors.

### Product Info

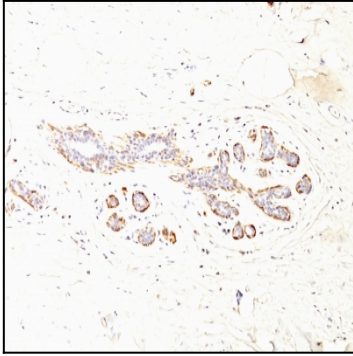
<b>Amount :</b>	100 µg
<b>Purification :</b>	Affinity Chromatography
<b>Content :</b>	100 µg in 500 µl PBS containing 0.05% BSA and 0.05% sodium azide. Sodium azide is highly toxic.
<b>Storage condition :</b>	Store the antibody at 4°C; stable for 6 months. For long-term storage; store at -20°C. Avoid repeated freeze and thaw cycles.

### Application Note

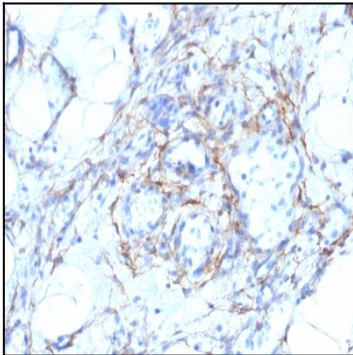
Flow Cytometry (1-2ug/million cells); Immunofluorescence (1-2ug/ml); Immunohistochemistry (Formalin-fixed) (1-2ug/ml for 30 minutes at RT)(Staining of formalin-fixed tissues requires heating tissue sections in 10mM Tris with 1mM EDTA, pH 9.0, for 45 min at 95&degC followed by cooling at RT for 20 minutes);



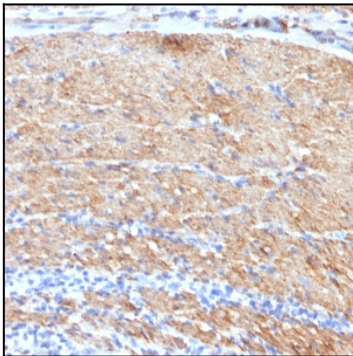
Formalin-fixed, paraffin-embedded human Leiomyosarcoma stained with SM-MHC Monoclonal Antibody (MYH11/923 + SMMS-1).



Formalin-fixed, paraffin-embedded human Breast Carcinoma stained with SM-MHC Monoclonal Antibody (MYH11/923 + SMMS-1).



Formalin-fixed, paraffin-embedded human Angiosarcoma stained with SM-MHC Monoclonal Antibody (MYH11/923 + SMMS-1).



Formalin-fixed, paraffin-embedded human Colon Carcinoma stained with SM-MHC Monoclonal Antibody (MYH11/923 + SMMS-1).