

10-4126: Monoclonal Antibody to Mouse CD16/32 (Clone: 2.4G2)

| | |
|--------------------------------|---|
| Clonality : | Monoclonal |
| Clone Name : | 2.4G2 |
| Application : | FACS |
| Reactivity : | Mouse |
| Gene : | Fcgr2, Fcgr3 |
| Gene ID : | 14130 |
| Uniprot ID : | P08101, P08508 |
| Format : | Purified |
| Alternative Name : | Fc gamma receptor IIB, IgG Fc receptor II beta, Lymphocyte antigen 17, Fcgr2b, Ly-17, /Low affinity immunoglobulin gamma Fc region receptor III, FcRIII |
| Isotype : | Rat IgG2b k |
| Immunogen Information : | Mouse BALB/c Macrophage J774 Cell Line |

Product Info

| | |
|----------------------------|---|
| Amount : | 25 µg / 100 µg |
| Purification : | Protein G Chromatography |
| Content : | 25 µg in 50 µl/100 µg in 200 µl PBS containing 0.05% BSA and 0.05% sodium azide. Sodium azide is highly toxic. |
| Storage condition : | Store the antibody at 4°C, stable for 6 months. For long-term storage, store at -20°C. Avoid repeated freeze and thaw cycles. |

Application Note

FACS analysis: 0.5-1 µg/10⁶ cells

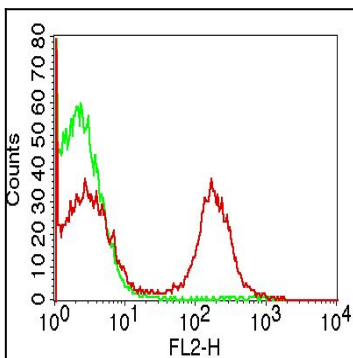


Figure-1: Cell surface flowcytometric analysis of mCD16/32 in Mouse splenocytes using 0.5 µg/10⁶ cells of mCD16/32 (Clone:2.4G2). Green represent Isotype control and Red represent Anti-CD16/32 antibody (10-4126). Anti-Rat PE conjugated was used as secondary antibody.

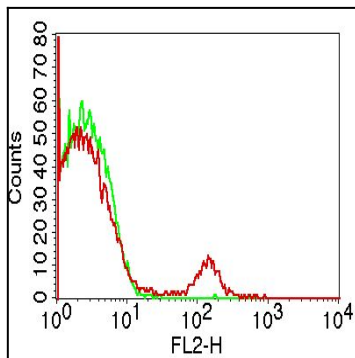


Figure-2: Cell surface flowcytometric analysis of mCD16/32 in Mouse Lymph node cells using 0.5 $\mu\text{g}/10^6$ cells of mCD16/32 (Clone:2.4G2). Green represent Isotype control and Red represent Anti-CD16/32 antibody (10-4126). Anti-Rat PE conjugated was used as secondary antibody.