

10-3028: Monoclonal Antibody to EPS8 (Clone: ABM4H15)

Clonality :	Monoclonal
Clone Name :	ABM4H15
Application :	WB
Reactivity :	Human
Gene :	EPS8
Gene ID :	2059
Uniprot ID :	Q12929
Format :	Purified
Alternative Name :	Epidermal growth factor receptor kinase substrate 8
Isotype :	Mouse IgG1, Kappa
Immunogen Information :	A partial length recombinant protein of EPS8 (amino acid 610-822) was used as the immunogen for this antibody.

Product Info

Amount :	25 µg / 100 µg
Purification :	Protein G Chromatography
Content :	25 µg in 50 µl/100 µg in 200 µl PBS containing 0.05% BSA and 0.05% sodium azide. Sodium azide is highly toxic.
Storage condition :	Store the antibody at 4°C, stable for 6 months. For long-term storage, store at -20°C. Avoid repeated freeze and thaw cycles.

Application Note

Western blot analysis : 4-6 µg/ml

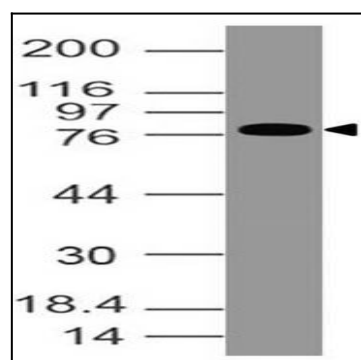


Figure-1: Western blot analysis of EPS8. Anti EPS8 (Clone: ABM4H15) was used at 4 µg/ml in SNU1 lysate.