

10-7011: Monoclonal Antibody to MLH1 (Clone:ABM17C1)

| | |
|--------------------------------|--|
| Clonality : | Monoclonal |
| Clone Name : | ABM17C1 |
| Application : | FACS,WB |
| Reactivity : | Human |
| Gene : | MLH1 |
| Gene ID : | 4292 |
| Uniprot ID : | P40692 |
| Format : | Purified |
| Alternative Name : | COCA2, MutL |
| Isotype : | mouse IgG1,Kappa |
| Immunogen Information : | A partial length recombinant MLH1 protein (amino acids 375-600) was used as the immunogen for this antibody. |

Product Info

| | |
|----------------------------|---|
| Amount : | 25 µg / 100 µg |
| Purification : | Protein G Chromatography |
| Content : | 25 µg in 50 µl/100 µg in 200 µl PBS containing 0.05% BSA and 0.05% sodium azide. Sodium azide is highly toxic. |
| Storage condition : | Store the antibody at 4°C, stable for 6 months. For long-term storage, store at -20°C. Avoid repeated freeze and thaw cycles. |

Application Note

Western blot analysis: 4-6 µg/ml, Flowcytometric analysis: 2-4 µg/10⁶ Cells

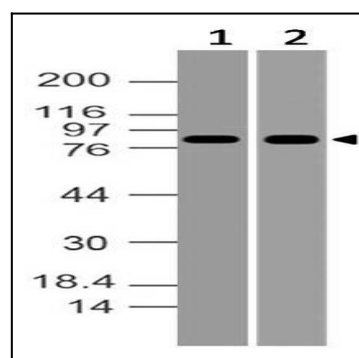


Figure-1: Western blot analysis of MLH1. Anti- MLH1 antibody (Clone: ABM17C1) was used at 4 µg/ml on (1) MCF-7 and (2) Raji lysates.

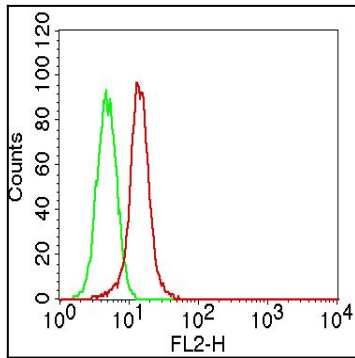


Figure-2: Intracellular flow cytometric analysis of MLH1 in A431 cells using 2 $\mu\text{g}/10^6$ cells of Anti-MLH1 (Clone: ABM17C1). Green represent isotype control and red represent Anti MLH1 antibody. PE conjugate Goat anti mouse IgG was used as secondary control