

## 39-2153: Anti-IL6 Polyclonal Antibody

<b>Clonality :</b>	Polyclonal
<b>Application :</b>	WB
<b>Reactivity :</b>	Rat
<b>Gene :</b>	Il6
<b>Gene ID :</b>	24498
<b>Uniprot ID :</b>	P20607
<b>Format :</b>	Lyophilized
<b>Alternative Name :</b>	Interleukin-6; IL-6; Il6; Il-6
<b>Isotype :</b>	Rabbit IgG
<b>Immunogen Information :</b>	E.coli-derived rat IL6 recombinant protein (Position: F25-T211). Rat IL6 shares 86% amino acid (aa) sequence identity with mouse IL6.

### Description

Interleukin-6 (IL-6) is a protein that in humans is encoded by the IL6 gene. IL-6 is an interleukin that acts as both a pro-inflammatory and anti-inflammatory cytokine. It is secreted by T cells and macrophages to stimulate immune response to trauma, especially burns or other tissue damage leading to inflammation. IL-6 is one of the most important mediators of fever and of the acute phase response. IL-6 is also essential for hybridoma growth and is found in many supplemental cloning media such as briclone. Bowcock et al. (1988) assigned the IL6 gene to chromosome 7p21. By in situ hybridization and Southern blot analysis of mouse-human hybrid cell lines, Sutherland et al. (1988) mapped the IL-6 gene to chromosome 7p15.

### Product Info

<b>Amount :</b>	100 µg/vial
<b>Purification :</b>	Immunogen affinity purified.
<b>Content :</b>	Each vial contains 5mg BSA, 0.9mg NaCl, 0.2mg Na <sub>2</sub> HPO <sub>4</sub> , 0.05mg NaN <sub>3</sub> . Reconstitute : Add 0.2ml of distilled water will yield a concentration of 500ug/ml.
<b>Storage condition :</b>	At -20°C for one year. After reconstitution, at 4°C for one month. It can also be aliquotted and stored frozen at -20°C for a longer time. Avoid repeated freezing and thawing.

### Application Note

Western blot : 0.1-0.5 µg/ml

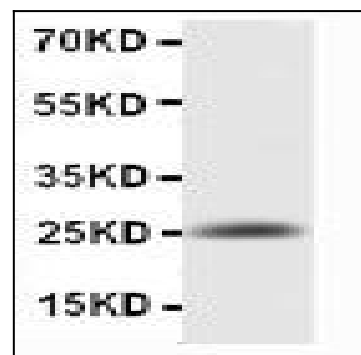


Figure 1: Anti-IL-6 antibody(39-2153). Lanes: Anti-IL-6(39-2153) at 0.5ug/ml. WB: Recombinant Rat IL-6 Protein 0.5ng. Predicted band size: 25 kDa.Observed band size: 25 kDa.