

## 39-2152: Anti-Adiponectin Polyclonal Antibody

<b>Clonality :</b>	Polyclonal
<b>Application :</b>	WB,IHC-P
<b>Reactivity :</b>	Human
<b>Gene :</b>	ADIPOQ
<b>Gene ID :</b>	9370
<b>Uniprot ID :</b>	Q15848
<b>Format :</b>	Lyophilized
<b>Alternative Name :</b>	Adiponectin; 30 kDa adipocyte complement-related protein; Adipocyte complement-related 30 kDa protein; ACRP30; Adipocyte, C1q and collagen domain-containing protein
<b>Isotype :</b>	Rabbit IgG
<b>Immunogen Information :</b>	E.coli-derived Human adiponectin recombinant protein (Position: E19-N244). Human adiponectin shares 85% amino acid (aa) sequence identity with Mouse adiponectin.

### Description

ADIPOQ (Adipocyte-, C1q-, and Collagen Domain-Containing), also known as APM1, ADPN or ACDC, is a protein which in humans is encoded by the ADIPOQ gene. Using FISH, Das et al. (2001) mapped the mouse Acrp30 gene to chromosome 16 in a region showing homology of synteny with human 3q27. By RNase protection and Western blot analysis, Schaffler et al. (1999) showed that APM1 is expressed by differentiated adipocytes as a 33-kD protein that is also detectable in serum. By sequence comparisons, they found links between APM1 and TNF family ligands as well as to cytokines expressed by T cells. Adiponectin is a protein hormone that modulates a number of metabolic processes, including glucose regulation and fatty acid oxidation. Adiponectin is exclusively secreted from adipose tissue (and also from the placenta in pregnancy) into the bloodstream and is very abundant in plasma relative to many hormones.

### Product Info

<b>Amount :</b>	100 µg/vial
<b>Purification :</b>	Immunogen affinity purified.
<b>Content :</b>	Each vial contains 5mg BSA, 0.9mg NaCl, 0.2mg Na <sub>2</sub> HPO <sub>4</sub> , 0.05mg Na <sub>3</sub> N. Reconstitute : Add 0.2ml of distilled water will yield a concentration of 500ug/ml.
<b>Storage condition :</b>	At -20°C for one year. After reconstitution, at 4°C for one month. It can also be aliquotted and stored frozen at -20°C for a longer time. Avoid repeated freezing and thawing.

### Application Note

Western blot : 0.1-0.5 µg/ml; Immunohistochemistry(Paraffin-embedded Section) : 0.5-1 µg/ml

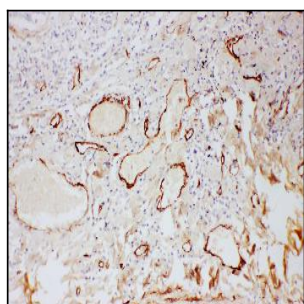


Figure 1: Anti-Adiponectin antibody(39-2152). IHC(P): Human Lung Cancer Tissue.

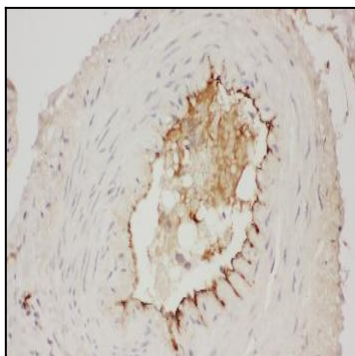


Figure 2: Anti-Adiponectin antibody(39-2152). IHC(P): Human Mammary Cancer Tissue.

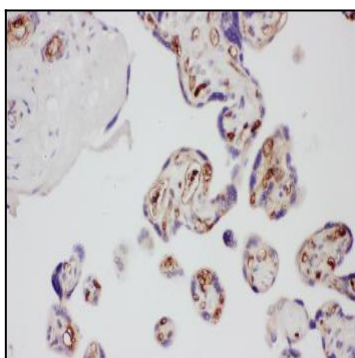


Figure 3: Anti-Adiponectin antibody(39-2152). IHC(P): Human Placenta Tissue.

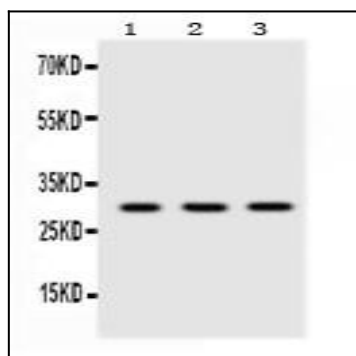


Figure 4: Anti-Adiponectin antibody(39-2152). Western blotting: Lanes: Anti Adiponectin(39-2152) at 0.5ug/ml. Lane 1: Human Placenta Tissue Lysate at 50ug, Lane 2: HELA Whole Cell Lysate at 40ug, Lane 3: JURKAT Whole Cell Lysate at 40ug. Predicted band size: 30 kDa. Observed band size 30 kDa.