

## 39-2151: Polyclonal Antibody to Anti-MCC Antibody(Discontinued)

<b>Clonality :</b>	Polyclonal
<b>Application :</b>	WB
<b>Reactivity :</b>	Human
<b>Gene :</b>	MCC
<b>Gene ID :</b>	4163
<b>Uniprot ID :</b>	P23508
<b>Alternative Name :</b>	Colorectal mutant cancer protein; Protein MCC; MCC
<b>Isotype :</b>	Rabbit IgG
<b>Immunogen Information :</b>	A synthetic peptide corresponding to a sequence at the C-terminus of human MCC(573-590aa IQQLKNDRAAVKLTMLEL), identical to the related mouse and rat sequences.

### Description

MUTATED IN COLORECTAL CANCERS(MCC) is a tumor suppressor gene. It is mapped to 5q22.2. This gene suppresses cell proliferation and the Wnt/b-catenin pathway in colorectal cancer cells. MCC also Inhibits DNA binding of b-catenin/TCF/LEF transcription factors, and it is Involved in cell migration independently of RAC1, CDC42 and p21-activated kinase(PAK) activation. What's more, MCC can interact with SCRIB(via phosphorylated PDZ-binding motif), EZR, SNX27, SLC9A3R1 and SLC9A3R2.

### Product Info

<b>Amount :</b>	100 µg/vial
<b>Purification :</b>	Immunogen affinity purified.
<b>Content :</b>	Each vial contains 5mg BSA, 0.9mg NaCl, 0.2mg Na <sub>2</sub> HPO <sub>4</sub> , 0.05mg Thimerosal, 0.05mg NaN <sub>3</sub> . Reconstitute : Add 0.2ml of distilled water will yield a concentration of 500ug/ml.
<b>Storage condition :</b>	At -20°C for one year. After reconstitution, at 4°C for one month. It can also be aliquotted and stored frozen at -20°C for a longer time. Avoid repeated freezing and thawing.

### Application Note

Western blot : 0.1-0.5µg/ml

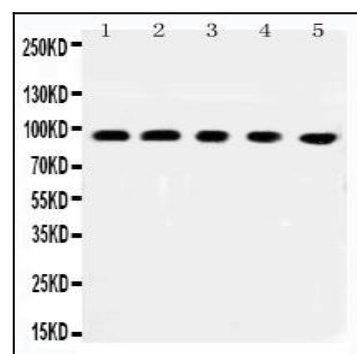


Figure 1: Anti-MCC antibody(39-2151). All Western blotting: All Lanes: Anti-MCC(39-2151) at 0.5ug/ml. Lane 1: Rat Brain Tissue Lysate at 40ug, Lane 2: 293T Whole Cell Lysate at 40ug, Lane 3: NIH Whole Cell Lysate at 40ug, Lane 4: A549 Whole Cell Lysate at 40ug, Lane 5: HEPG2 Whole Cell Lysate at 40ug. Predicted band size: 93 kDa.Observed band size: 93 kDa.