

39-2141: Anti-VEGF Receptor 1 Polyclonal Antibody

Clonality :	Polyclonal
Application :	WB
Reactivity :	Rat
Gene :	Flt1
Gene ID :	14254
Uniprot ID :	P35969
Alternative Name :	Vascular endothelial growth factor receptor 1; VEGFR-1; 2.7.10.1; Embryonic receptor kinase 2; Fms-like tyrosine kinase 1; FLT-1; Tyrosine-protein kinase receptor FLT; Flt1; Emrk2, Flt, Vegfr1
Isotype :	Rabbit IgG

Description

Vascular endothelial growth factor receptor 1(FLT1) is a protein that in humans is encoded by the FLT1 gene. Oncogene FLT belongs to the src gene family. It is mapped to 13q12. The deduced 1,338-amino acid protein has a calculated molecular mass of 150.6 kD. It has a 758-amino acid extracellular domain, followed by a 22-amino acid transmembrane region and a 558-amino acid cytoplasmic region containing a cluster of basic amino acids and a tyrosine kinase domain. sFLT-1 was identified in placenta, adult lung, kidney, liver and uterus. Like other members of this family, it shows tyrosine protein kinase activity that is important for the control of cell proliferation and differentiation.

Product Info

Amount :	100 µg/vial
Purification :	Immunogen affinity purified.
Content :	Each vial contains 5mg BSA, 0.9mg NaCl, 0.2mg Na ₂ HPO ₄ , 0.05mg Thimerosal, 0.05mg Na ₃ . Reconstitute : Add 0.2ml of distilled water will yield a concentration of 500ug/ml.
Storage condition :	At -20°C for one year. After reconstitution, at 4°C for one month. It can also be aliquotted and stored frozen at -20°C for a longer time. Avoid repeated freezing and thawing.

Application Note

Western blot : 0.1-0.5µg/ml

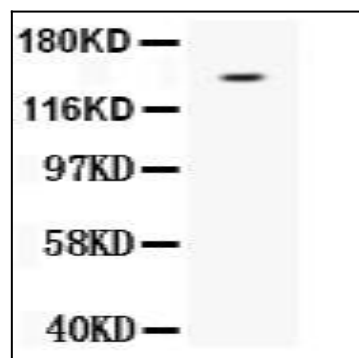


Figure 1: Anti-FLT1 antibody(39-2141). Western blotting: Lanes: Anti VEGF Receptor 1(39-2141) at 0.5ug/ml. WB: HEPA Whole Cell Lysate at 40ug. Predicted band size: 150 kDa. Observed band size: 150 kDa