

## 39-2110: Anti-BCL2L2 Polyclonal Antibody

<b>Clonality :</b>	Polyclonal
<b>Application :</b>	WB
<b>Reactivity :</b>	Human
<b>Gene :</b>	BCL2L2
<b>Gene ID :</b>	599
<b>Uniprot ID :</b>	Q92843
<b>Alternative Name :</b>	Bcl-2-like protein 2; Bcl2-L-2; Apoptosis regulator Bcl-W; BCL2L2; BCLW, KIAA0271
<b>Isotype :</b>	Rabbit IgG

### Description

Bcl-2-like protein 2 is a protein that in humans is encoded by the BCL2L2 gene. This gene encodes a pro-survival(anti-apoptotic) member of the bcl-2 protein family. Its gene is mapped to human chromosome 14q11.2-q12. In all, it has got 193 amino acids. Generally speaking, the BCL2 can be found in brain, colon and salivary gland. Acting as the Anti-and pro-apoptotic regulators, it has played a vital role in reducing the cell apoptosis under cytotoxic conditions.

### Product Info

<b>Amount :</b>	100 µg/vial
<b>Purification :</b>	Immunogen affinity purified.
<b>Content :</b>	Each vial contains 5mg BSA, 0.9mg NaCl, 0.2mg Na <sub>2</sub> HPO <sub>4</sub> , 0.05mg Thimerosal, 0.05mg NaN <sub>3</sub> . Reconstitute : Add 0.2ml of distilled water will yield a concentration of 500ug/ml.
<b>Storage condition :</b>	At -20°C for one year. After reconstitution, at 4°C for one month. It can also be aliquotted and stored frozen at -20°C for a longer time. Avoid repeated freezing and thawing.

### Application Note

Western blot : 0.1-0.5µg/ml

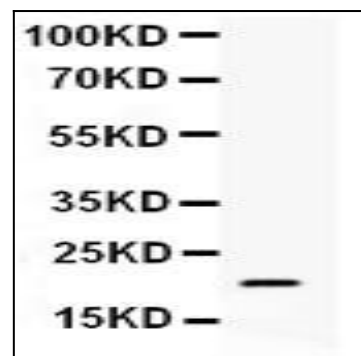


Figure 1: Anti-BCL2L2 antibody(39-2110). Western blotting: Lanes: Anti BCL2L2(39-2110) at 0.5ug/ml. WB: HELA Whole Cell Lysate at 40ug. Predicted band size: 21 kDa. Observed band size: 21 kDa.

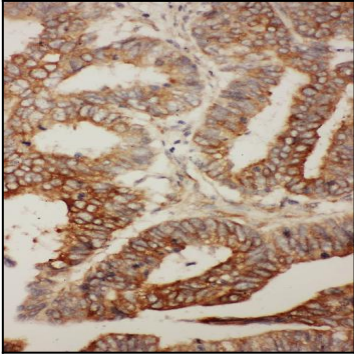


Figure 2: Anti-BCL2L2 antibody(39-2110). IHC(P): Human Rectal Cancer Tissue.