

39-2105: Polyclonal Antibody to Anti-Angiopoietin 1 Antibody(Discontinued)

| | |
|---------------------------|---|
| Clonality : | Polyclonal |
| Application : | WB |
| Gene : | ANGPT1 |
| Gene ID : | 284 |
| Uniprot ID : | Q15389 |
| Alternative Name : | Angiopoietin-1; ANG-1; ANGPT1; KIAA0003 |
| Isotype : | Rabbit IgG |

Description

Angiopoietin 1 is a type of angiopoietin and is encoded by the gene ANGPT1. Angiopoietins are proteins with important roles in vascular development and angiogenesis. All angiopoietins bind with similar affinity to an endothelial cell-specific tyrosine-protein kinase receptor. The protein encoded by this gene is a secreted glycoprotein that activates the receptor by inducing its tyrosine phosphorylation. It plays a critical role in mediating reciprocal interactions between the endothelium and surrounding matrix and mesenchyme. The protein also contributes to blood vessel maturation and stability, and may be involved in early development of the heart. Angiopoietin-1 seems to play a crucial role in mediating reciprocal interactions between the endothelium and surrounding matrix and mesenchyme. Endothelial Tie2/Tek ligands angiopoietin-1(ANGPT1) and angiopoietin-2(ANGPT2): regional localization of the human genes to 8q22.3-q23 and 8p23.

Product Info

| | |
|----------------------------|--|
| Amount : | 100 µg/vial |
| Purification : | Immunogen affinity purified. |
| Content : | Each vial contains 5mg BSA, 0.9mg NaCl, 0.2mg Na ₂ HPO ₄ , 0.05mg Thimerosal, 0.05mg NaN ₃ . Reconstitute : Add 0.2ml of distilled water will yield a concentration of 500ug/ml. |
| Storage condition : | At -20°C for one year. After reconstitution, at 4°C for one month. It can also be aliquotted and stored frozen at -20°C for a longer time. Avoid repeated freezing and thawing. |

Application Note

Western blot : 0.1-0.5µg/ml; Immunohistochemistry(Paraffin-embedded Section) : 0.5-1µg/ml

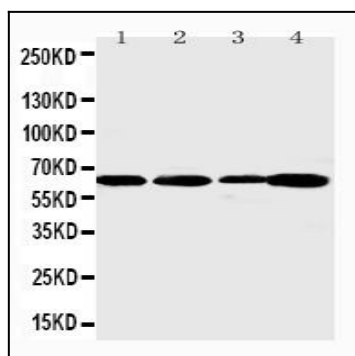


Figure 1: Anti-Angiopoietin 1 antibody(39-2105). Western blotting : Lane 1: Rat Heart Tissue Lysate, Lane 2: Rat Brain Tissue Lysate, Lane 3: Rat Kidney Tissue Lysate, Lane 4: SMMC Cell Lysate.

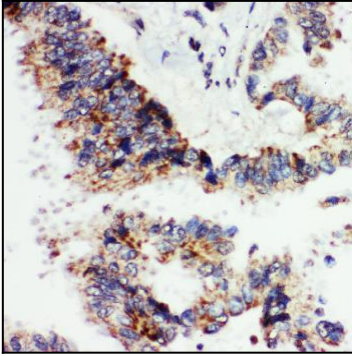


Figure 2: Anti-Angiopoietin 1 antibody(39-2105). IHC(P): Human Lung Cancer Tissue.