

39-2070: Anti-Lamin A/C Polyclonal Antibody

Clonality :	Polyclonal
Application :	WB,IHC-P,ICC
Reactivity :	Human, Mouse, Rat
Gene :	LMNA
Gene ID :	4000
Uniprot ID :	P02545
Format :	Lyophilized
Alternative Name :	Prelamin-A/C; Lamin-A/C; 70 kDa lamin; Renal carcinoma antigen NY-REN-32; LMNA; LMN1
Isotype :	Rabbit IgG
Immunogen Information :	A synthetic peptide corresponding to a sequence at the C-terminus of Human Lamin A/C(455-469aa RNKSNEQSMGNWQI), identical to the related Rat and Mouse sequences.

Description

Lamins are structural protein components of the nuclear lamina, a protein network underlying the inner nuclear membrane that determines nuclear shape and size. There are three types of lamins, A,B and C. The lamin A/C(LMNA) gene contains 12 exons. Alternative splicing within exon 10 gives rise to two different mRNAs that code for pre-lamin A and lamin C. Lamin A/C mapped to 1q21.2-q21.3 and mutations in this gene cause a variety of human diseases including Emery-Dreifuss muscular dystrophy, dilated cardiomyopathy, and Hutchinson-Gilford progeria syndrome. Lamin A/C deficiency is thus associated with both defective nuclear mechanics and impaired mechanically activated gene transcription.

Product Info

Amount :	100 µg/vial
Purification :	Immunogen affinity purified.
Content :	Each vial contains 5mg BSA, 0.9mg NaCl, 0.2mg Na ₂ HPO ₄ , 0.05mg Thimerosal, 0.05mg NaN ₃ . Reconstitute : Add 0.2ml of distilled water will yield a concentration of 500ug/ml.
Storage condition :	At -20°C for one year. After reconstitution, at 4°C for one month. It can also be aliquotted and stored frozen at -20°C for a longer time. Avoid repeated freezing and thawing.

Application Note

Western blot : 0.1-0.5 µg/ml; Immunohistochemistry(Paraffin-embedded Section) : 0.5-1 µg/ml;
Immunocytochemistry : 0.5-1 µg/ml

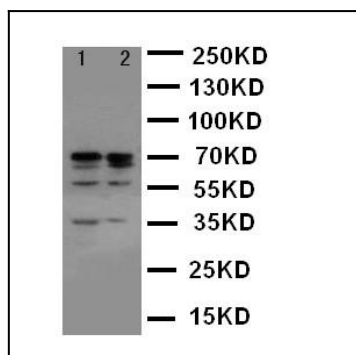


Figure 1: Anti-Lamin A+C antibody(39-2070). Western blotting : Lane 1: HELA Cell Lysate, Lane 2: A431 Cell Lysate.

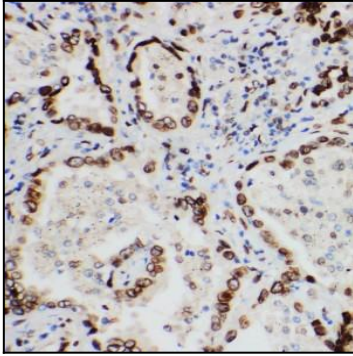


Figure 2: Anti-Lamin A+C antibody(39-2070). IHC(P): Human Lung Cancer Tissue.

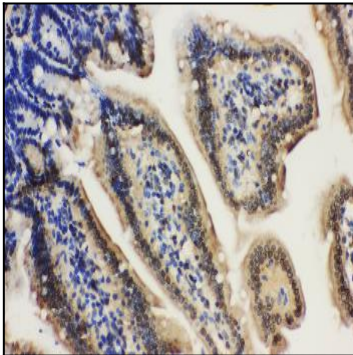


Figure 3: Anti-Lamin A+C antibody(39-2070). IHC(P): Mouse Intestine Tissue.

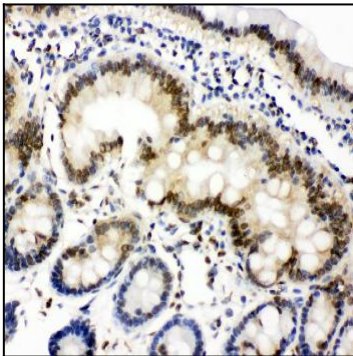


Figure 4: Anti-Lamin A+C antibody(39-2070). IHC(P): Rat Intestine Tissue.