

## 39-2064: Anti-TIMP3 Polyclonal Antibody

<b>Clonality :</b>	Polyclonal
<b>Application :</b>	WB,ELISA
<b>Reactivity :</b>	Human
<b>Gene :</b>	TIMP3
<b>Gene ID :</b>	7078
<b>Uniprot ID :</b>	P35625
<b>Format :</b>	Lyophilized
<b>Alternative Name :</b>	Metalloproteinase inhibitor 3; Protein MIG-5; Tissue inhibitor of metalloproteinases 3; TIMP-3; TIMP3
<b>Isotype :</b>	Rabbit IgG
<b>Immunogen Information :</b>	A synthetic peptide corresponding to a sequence at the C-terminus of human TIMP3(198-211aa WAPPDKSIINATDP), different from the related rat and mouse sequences by one amino acid.

### Description

Metalloproteinase inhibitor 3 is a protein that in humans is encoded by the TIMP3 gene. It is mapped to 22q12.1-q13.2. This gene belongs to the tissue inhibitor of metalloproteinases gene family. The proteins encoded by this gene family are inhibitors of the matrix metalloproteinases, a group of peptidases involved in degradation of the extracellular matrix (ECM). Expression of this gene is induced in response to mitogenic stimulation and this netrin domain-containing protein is localized to the ECM. Mutations in this gene have been associated with the autosomal dominant disorder Sorsby's fundus dystrophy.

### Product Info

<b>Amount :</b>	100 µg/vial
<b>Purification :</b>	Immunogen affinity purified.
<b>Content :</b>	Each vial contains 5mg BSA, 0.9mg NaCl, 0.2mg Na <sub>2</sub> HPO <sub>4</sub> , 0.05mg Thimerosal, 0.05mg NaN <sub>3</sub> . Reconstitute : Add 0.2ml of distilled water will yield a concentration of 500ug/ml.
<b>Storage condition :</b>	At -20°C for one year. After reconstitution, at 4°C for one month. It can also be aliquotted and stored frozen at -20°C for a longer time. Avoid repeated freezing and thawing.

### Application Note

Western blot : 0.1-0.5 µg/ml; ELISA : 0.1-0.5 µg/ml

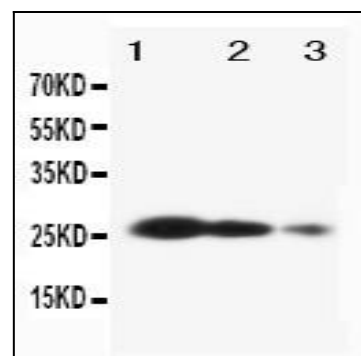


Figure 1: Anti-TIMP3 antibody(39-2064). Western blotting: Lane 1: Recombinant Human TIMP3 Protein 10ng, Lane 2: Recombinant Human TIMP3 Protein 5ng, Lane 3: Recombinant Human TIMP3 Protein 2.5ng.