

39-2057: Anti-Sonic Hedgehog Polyclonal Antibody

Clonality :	Polyclonal
Application :	WB
Reactivity :	Human
Gene :	SHH
Gene ID :	6469
Uniprot ID :	Q15465
Alternative Name :	Sonic hedgehog protein; SHH; HHG-1; Sonic hedgehog protein N-product; Sonic hedgehog protein C-product; SHH
Isotype :	Rabbit IgG

Description

The mouse, chicken, and zebrafish Shh homologs are highly conserved. SHH expression was not detected in adult tissues examined. However, it was expressed in fetal intestine, liver, lung, and kidney. SHH gene is mapped to 7q. SHH mutations are not a frequent cause of isolated oral clefts.

Product Info

Amount :	100 µg/vial
Purification :	Immunogen affinity purified.
Content :	Each vial contains 5mg BSA, 0.9mg NaCl, 0.2mg Na ₂ HPO ₄ , 0.05mg Thimerosal, 0.05mg Na ₃ N. Reconstitute : Add 0.2ml of distilled water will yield a concentration of 500ug/ml.
Storage condition :	At -20°C for one year. After reconstitution, at 4°C for one month. It can also be aliquotted and stored frozen at -20°C for a longer time. Avoid repeated freezing and thawing.

Application Note

Western blot : 0.1-0.5µg/ml; Immunohistochemistry(Paraffin-embedded Section) : 0.5-1µg/ml

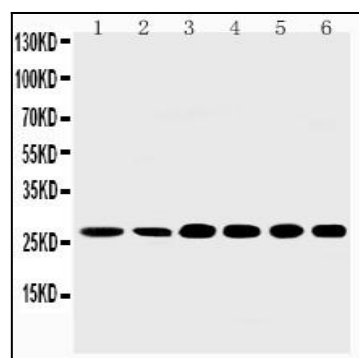


Figure 1: Anti-Sonic Hedgehog antibody(39-2057). Western blotting : Lane 1: Rat Liver Tissue Lysate, Lane 2: Rat Intestine Tissue Lysate, Lane 3: HELA Cell Lysate, Lane 4: A549 Cell Lysate, Lane 5: SMMC Cell Lysate, Lane 6: MM231 Cell Lysate.

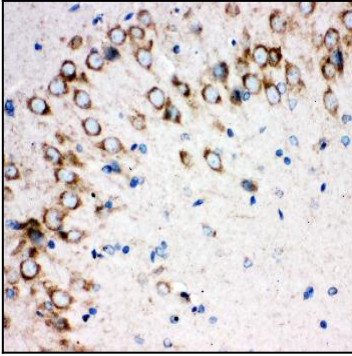


Figure 2: Anti-Sonic Hedgehog antibody(39-2057). IHC(P): Rat Brain Tissue.

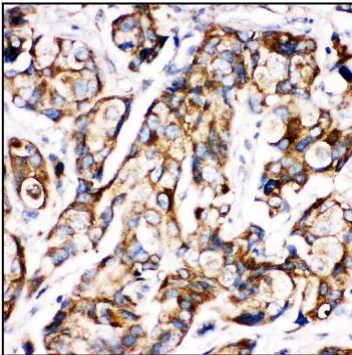


Figure 3: Anti-Sonic Hedgehog antibody(39-2057). IHC(P): Human Mammary Tissue.