

39-2051: Anti-Integrin alpha 1 Polyclonal Antibody

Clonality :	Polyclonal
Application :	WB
Reactivity :	Human
Gene :	ITGA1
Gene ID :	3672
Uniprot ID :	P56199
Alternative Name :	Integrin alpha-1; CD49 antigen-like family member A; Laminin and collagen receptor; VLA-1; CD49a; ITGA1
Isotype :	Rabbit IgG

Description

Integrin alpha 1 (ITGA1) chain associates with the beta 1 (ITGB1) chain to form a heterodimer that functions as a dual laminin/collagen receptor in neural cells and hematopoietic cells. ITGA1 has a 206-amino acid I domain in its N-terminal half, followed by 3 divalent cation-binding sites and a C-terminal transmembrane domain with a short cytoplasmic tail. It also has 28 potential N-glycosylation sites. Human ITGA1 was expressed in a mouse fibroblast cell line as a 180-kD protein. ITGA1 is involved in the early remodeling of osteoarthritic cartilage and plays an essential role in the regulation of mesenchymal stem cell proliferation and cartilage production. It also plays an essential role in the regulation of MHC proliferation and cartilage production.

Product Info

Amount :	100 µg/vial
Purification :	Immunogen affinity purified.
Content :	Each vial contains 4mg Trehalose, 0.9mg NaCl and 0.2mg Na ₂ HPO ₄ . Reconstitute : Add 0.2ml of distilled water will yield a concentration of 500ug/ml.
Storage condition :	At -20°C for one year. After reconstitution, at 4°C for one month. It can also be aliquotted and stored frozen at -20°C for a longer time. Avoid repeated freezing and thawing.

Application Note

Western blot : 0.1-0.5µg/ml

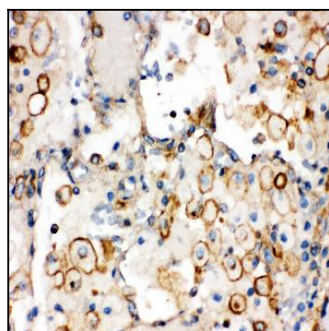


Figure 1: Anti-Integrin alpha 1 antibody(39-2051). IHC(P): Human Lung Cancer Tissue.

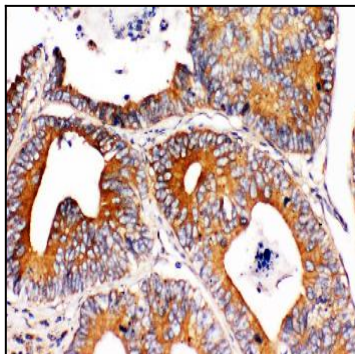


Figure 2: Anti-Integrin alpha 1 antibody(39-2051). IHC(P): Human Intestinal Cancer Tissue.

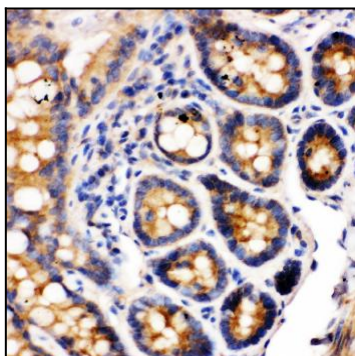


Figure 3: Anti-Integrin alpha 1 antibody(39-2051). IHC(P): Rat Intestine Tissue.

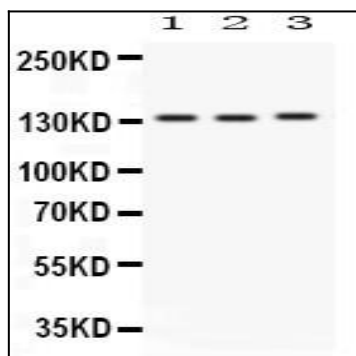


Figure 4: Anti-Integrin alpha 1 antibody(39-2051). Western blotting : Lanes: Anti ITGA1(39-2051) at 0.5ug/ml. Lane 1: Rat Brain Tissue Lysate at 50ug, Lane 2: HELA Whole Cell Lysate at 40ug, Lane 3: SW620 Whole Cell Lysate at 40ug. Predicted band size: 131 kDa: Observed band size: 131 kDa.