

39-2038: Anti-CD40L Polyclonal Antibody

Clonality :	Polyclonal
Application :	WB
Reactivity :	Human
Gene :	CD40LG
Gene ID :	959
Uniprot ID :	P29965
Alternative Name :	CD40 ligand; CD40-L; T-cell antigen Gp39; TNF-related activation protein; TRAP; Tumor necrosis factor ligand superfamily member 5; CD154; CD40 ligand, membrane form; CD40 ligand, soluble form; CD40LG; CD40L,
Isotype :	Rabbit IgG
Immunogen Information :	A synthetic peptide corresponding to a sequence at the N-terminus of human CD40L(47-65aa HRRLDKIEDERNLHEDFVF), different from the related mouse sequence by three amino acids, rat sequence by four amino acids.

Description

CD40 ligand(CD40L) is a type II membrane protein of 261 amino acids on activated T cells that induces B cell proliferation and immunoglobulin secretion. It has homology with tumour necrosis factor-alpha and -beta, and has important functions in B-cell activation and differentiation. Human CD40L with 5 exons, is mapped to the proximal region of the mouse X chromosome on Xq26.3-27.1, and can be detected on T cells but is absent from B cells and monocytes. Since CD40L is expressed on platelets and released from them on activation, its predictive value as a marker for clinical outcome and the therapeutic effect of inhibition of glycoprotein IIb /IIIa receptor in patients with acute coronary syndromes was investigated. The soluble CD40L may be involved in the process of restenosis and that it exerts its effect by triggering a complex group of inflammatory reactions on endothelial and mononuclear cells.

Product Info

Amount :	100 µg/vial
Purification :	Immunogen affinity purified.
Content :	Each vial contains 5mg BSA, 0.9mg NaCl, 0.2mg Na ₂ HPO ₄ , 0.05mg Thimerosal, 0.05mg Na ₃ . Reconstitute : Add 0.2ml of distilled water will yield a concentration of 500ug/ml.
Storage condition :	At -20°C for one year. After reconstitution, at 4°C for one month. It can also be aliquotted and stored frozen at -20°C for a longer time. Avoid repeated freezing and thawing.

Application Note

Western blot : 0.1-0.5µg/ml; Immunohistochemistry(Paraffin-embedded Section) : 0.5-1µg/ml

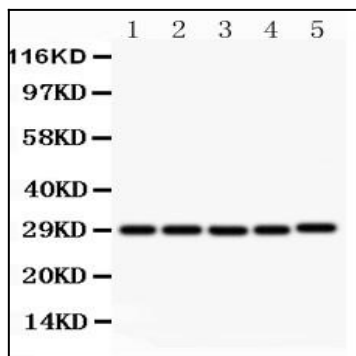


Figure 1: Anti-CD40L antibody(39-2038). Western blotting: Lanes: Anti CD40L(39-2038) at 0.5ug/ml, Lane 1: MCF-7 Whole Cell Lysate at 40ug, Lane 2: HELA Whole Cell Lysate at 40ug, Lane 3: JURKAT Whole Cell Lysate at 40ug, Lane 4: HMY2 Whole Cell Lysate at 40ug, Lane 5: COLO320 Whole Cell Lysate at 40ug. Predicted band size: 29 kDa. Observed band size: 29 kDa.

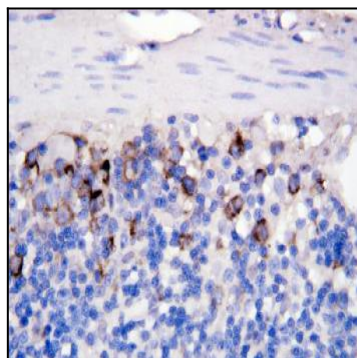


Figure 2: Anti CD40 Lantibody(39-2038). IHC(P): Rat Intestine Tissue.