

## 39-2037: Anti-CD40 Polyclonal Antibody

<b>Clonality :</b>	Polyclonal
<b>Application :</b>	WB
<b>Reactivity :</b>	Human
<b>Gene :</b>	CD40
<b>Gene ID :</b>	958
<b>Uniprot ID :</b>	P25942
<b>Format :</b>	Lyophilized
<b>Alternative Name :</b>	Tumor necrosis factor receptor superfamily member 5; B-cell surface antigen CD40; Bp50; CD40L receptor; CDw40; CD40; CD40; TNFRSF5
<b>Isotype :</b>	Rabbit IgG
<b>Immunogen Information :</b>	A synthetic peptide corresponding to a sequence at the N-terminus of human CD40(20-37aa, PEPPTACREKQYLINSQC).

### Description

CD40 is a cell surface receptor that is expressed on the surface of all mature B cells and also expressed on monocytes, dendritic cells, and thymic epithelium. CD40 is a member of the tumor necrosis factor(TNF) receptor superfamily and is the receptor for CD40 ligand. CD40 ligand(CD40L, CD154, gp39, and TRAM) belongs to the TNF gene family and is expressed more widely than CD40 predominantly on activated CD4+ T cells. Activation of CD40 has also been shown to inhibit the growth of certain B cell lymphomas and to induce the death of transformed cells of mesenchymal or epithelial origin.

### Product Info

<b>Amount :</b>	100 µg/vial
<b>Purification :</b>	Immunogen affinity purified.
<b>Content :</b>	Each vial contains 5mg BSA, 0.9mg NaCl, 0.2mg Na2HPO4, 0.05mg Thimerosal, 0.05mg NaN3. Reconstitute : Add 0.2ml of distilled water will yield a concentration of 500ug/ml.
<b>Storage condition :</b>	At -20°C for one year. After reconstitution, at 4°C for one month. It can also be aliquotted and stored frozen at -20°C for a longer time. Avoid repeated freezing and thawing.

### Application Note

Western blot : 0.1-0.5 µg/ml

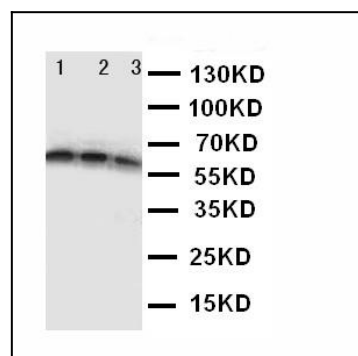


Figure 1: Anti-CD40 antibody(39-2037). Western blotting: Lane 1: Recombinant Human CD40 Protein 10ng, Lane 2: Recombinant Human CD40 Protein 5ng, Lane 3: Recombinant Human CD40 Protein 2.5ng.