

39-2024: Polyclonal Antibody to Anti-ATF6 Antibody(Discontinued)

Clonality :	Polyclonal
Application :	WB
Reactivity :	Human
Gene :	ATF6
Gene ID :	22926
Uniprot ID :	P18850
Alternative Name :	Cyclic AMP-dependent transcription factor ATF-6 alpha; cAMP-dependent transcription factor ATF-6 alpha; Activating transcription factor 6 alpha; ATF6-alpha
Isotype :	Rabbit IgG
Immunogen Information :	A synthetic peptide corresponding to a sequence at the C-terminus of human ATF6(599-614aa NINENVINGQDYEVMM), different from the related mouse and rat sequences by one amino acid.

Description

ATF6, a member of the leucine zipper protein family, is an endoplasmic reticulum(ER) stress-regulated transmembrane transcription factor that activates the transcription of ER molecules. ATF6 gene is mapped to chromosome 1q23.3. ATF6 can constitutively induce the promoter of glucose-regulated protein(grp) genes through activation of the endoplasmic reticulum(ER) stress element(ERSE).

Product Info

Amount :	100 µg/vial
Purification :	Immunogen affinity purified.
Content :	Each vial contains 5mg BSA, 0.9mg NaCl, 0.2mg Na ₂ HPO ₄ , 0.05mg Thimerosal, 0.05mg NaN ₃ . Reconstitute : Add 0.2ml of distilled water will yield a concentration of 500ug/ml.
Storage condition :	At -20°C for one year. After reconstitution, at 4°C for one month. It can also be aliquotted and stored frozen at -20°C for a longer time. Avoid repeated freezing and thawing.

Application Note

Western blot : 0.1-0.5µg/ml

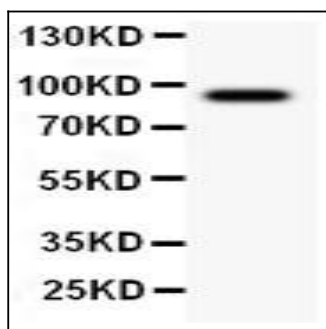


Figure 1: Anti-ATF6 antibody(39-2024). Western blotting: Lanes: Anti ATF6(39-2024) at 0.5ug/ml, WB: A549 Whole Cell Lysate at 40ug. Predicted band size: 75 kDa. Observed band size: 90 kDa.