

## 39-2022: Anti-Aquaporin 1 Polyclonal Antibody

<b>Clonality :</b>	Polyclonal
<b>Application :</b>	WB,IHC-P,IHC-F
<b>Reactivity :</b>	Human, Mouse, Rat
<b>Gene :</b>	AQP1
<b>Gene ID :</b>	358
<b>Uniprot ID :</b>	P29972
<b>Format :</b>	Lyophilized
<b>Alternative Name :</b>	Aquaporin-1; AQP-1; Aquaporin-CHIP; Urine water channel; Water channel protein for red blood cells and kidney proximal tubule; AQP1; CHIP28
<b>Isotype :</b>	Rabbit IgG
<b>Immunogen Information :</b>	A synthetic peptide corresponding to a sequence at the C-terminus of Human Aquaporin 1(251-269aa EEYDL DADDINSRVEMKPK), identical to the related Rat and Mouse sequences.

### Description

Aquaporin 1 is a 28-kD integral protein though at first to be a breakdown product of the Rh polypeptide but was later shown to be a unique molecule that is abundant in erythrocytes and renal tubules. AQP1 is also expressed by the choroid plexus and various other tissues. It forms a water-specific channel that provides the plasma membranes of red cells and kidney proximal tubules with high permeability to water, thereby permitting water to move in the direction of an osmotic gradient.

### Product Info

<b>Amount :</b>	100 µg/vial
<b>Purification :</b>	Immunogen affinity purified.
<b>Content :</b>	Each vial contains 5mg BSA, 0.9mg NaCl, 0.2mg Na <sub>2</sub> HPO <sub>4</sub> , 0.05mg Thimerosal, 0.05mg NaN <sub>3</sub> . Reconstitute : Add 0.2ml of distilled water will yield a concentration of 500ug/ml.
<b>Storage condition :</b>	At -20°C for one year. After reconstitution, at 4°C for one month. It can also be aliquotted and stored frozen at -20°C for a longer time. Avoid repeated freezing and thawing.

### Application Note

Western blot : 0.1-0.5 µg/ml; Immunohistochemistry(Paraffin-embedded Section) : 0.5-1 µg/ml;  
Immunohistochemistry(Frozen Section) : 0.5-1 µg/ml

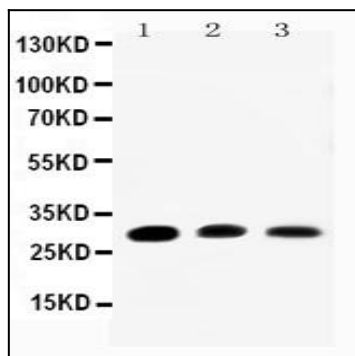


Figure 1: Anti-Aquaporin 1 antibody(39-2022). Western blotting: Lane 1: Rat Kidney Tissue Lysate, Lane 2: Rat Lung Tissue Lysate, Lane 3: SMMC Cell Lysate.

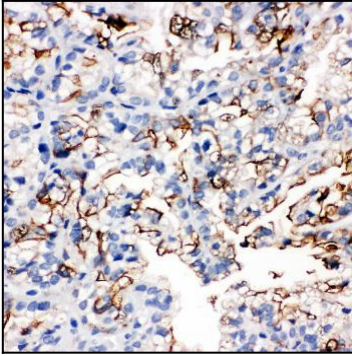


Figure 2: Anti-Aquaporin 1 antibody(39-2022). IHC(P): Human Kidney Cancer Tissue.

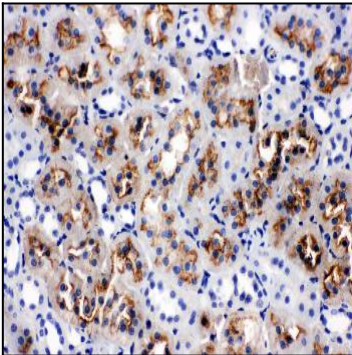


Figure 3: Anti-Aquaporin 1 antibody(39-2022). IHC(P): Rat Kidney Tissue.

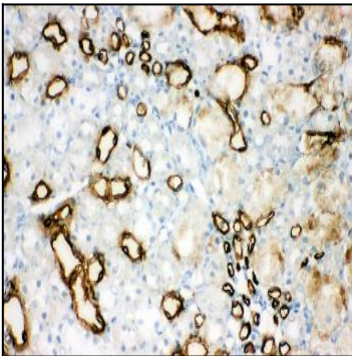


Figure 4: Anti-Aquaporin 1 antibody(39-2022). IHC(F): Rat Kidney Tissue.