

## 39-2021: Anti-Apoptosis inhibitor 5 Polyclonal Antibody

<b>Clonality :</b>	Polyclonal
<b>Application :</b>	WB,IHC-P,IHC-F,ICC
<b>Reactivity :</b>	Human, Mouse, Rat
<b>Gene :</b>	API5
<b>Gene ID :</b>	8539
<b>Uniprot ID :</b>	Q9BZZ5
<b>Format :</b>	Lyophilized
<b>Alternative Name :</b>	Apoptosis inhibitor 5; API-5; Antiapoptosis clone 11 protein; AAC-11; Cell migRation-inducing gene 8 protein; Fibroblast growth factor 2-interacting factor; FIF; Protein XAGL; API5; MIG8
<b>Isotype :</b>	Rabbit IgG
<b>Immunogen Information :</b>	A synthetic peptide corresponding to a sequence at the C-terminus of Human Apoptosis inhibitor 5(487-504aa KYSSNLGNFNYSRSLQGK)(b), different from the related Mouse sequence by one amino acid.

### Description

Many growth factors and cytokines act as cellular survival factors by preventing programmed cell death(apoptosis). Apoptosis inhibitor 5(API5) is an antiapoptotic factor which may have a role in protein assembly. The API5 gene to chromosome 11p12 based on an alignment of the API5 sequence with the genomic sequence It is a critical determinant of E2F1-induced apoptosis, acting downstream of E2F to suppress E2F-dependent apoptosis without generally blocking E2F-dependent transcription.

### Product Info

<b>Amount :</b>	100 µg/vial
<b>Purification :</b>	Immunogen affinity purified.
<b>Content :</b>	Each vial contains 5mg BSA, 0.9mg NaCl, 0.2mg Na2HPO4, 0.05mg Thimerosal, 0.05mg NaN3. Reconstitute : Add 0.2ml of distilled water will yield a concentration of 500ug/ml.
<b>Storage condition :</b>	At -20°C for one year. After reconstitution, at 4°C for one month. It can also be aliquotted and stored frozen at -20°C for a longer time. Avoid repeated freezing and thawing.

### Application Note

Western blot: 0.1-0.5 µg/ml; Immunohistochemistry(Paraffin-embedded Section): 0.5-1 µg/ml;  
Immunohistochemistry(Frozen Section): 0.5-1 µg/ml; Immunocytochemistry: 0.5-1 µg/ml

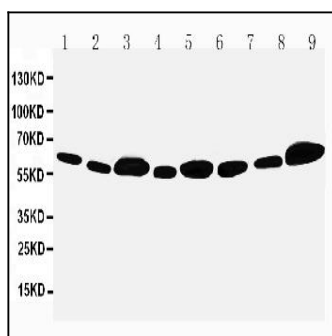


Figure 1: Anti-Apoptosis inhibitor 5 antibody(39-2021). Western blotting: Lane 1: Rat Cardiac Muscle Tissue Lysate, Lane 2: Rat Brain Tissue Lysate, Lane 3: Rat Testis Tissue Lysate, Lane 4: Rat Placenta Tissue Lysate, Lane 5: MCF-7 Cell Lysate, Lane 6: HELA Cell Lysate, Lane 7: CEM Cell Lysate, Lane 8: SMMC Cell Lysate, Lane 9: COLO320 Cell Lysate.

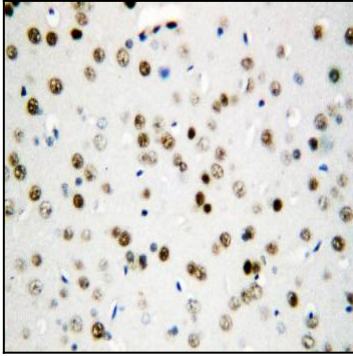


Figure 2: Anti-Apoptosis inhibitor 5 antibody(39-2021). IHC(P): Rat Brain Tissue.

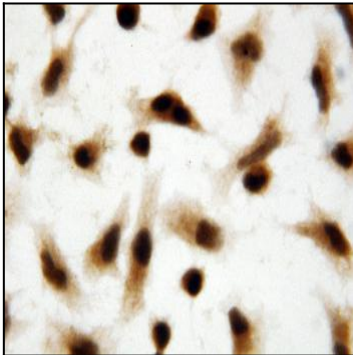


Figure 3: Anti-Apoptosis inhibitor 5 antibody(39-2021). ICC: HELA Cell.

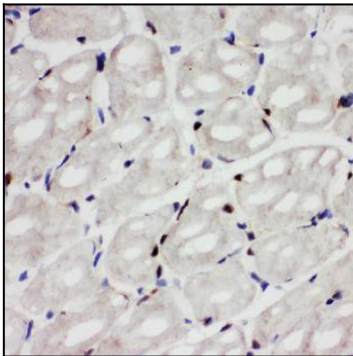


Figure 4: Anti-Apoptosis inhibitor 5 antibody(39-2021). IHC(F): Rat Cardiac Muscle Tissue.