

## 39-2011: Anti-Wnt7a Polyclonal Antibody

<b>Clonality :</b>	Polyclonal
<b>Application :</b>	WB,IHC-P
<b>Reactivity :</b>	Human, Mouse, Rat
<b>Gene :</b>	WNT7A
<b>Gene ID :</b>	7476
<b>Uniprot ID :</b>	O00755
<b>Format :</b>	Lyophilized
<b>Alternative Name :</b>	Protein Wnt-7a; WNT7A
<b>Isotype :</b>	Rabbit IgG
<b>Immunogen Information :</b>	A synthetic peptide corresponding to a sequence at the C-terminus of Human Wnt7a (226-256aa YVLKDKYNEAVHVEPVRASRNKRPTFLKIKK), identical to the related Mouse sequence.

### Description

This gene is a member of the WNT gene family, which consists of structurally related genes that encode secreted signaling proteins. These proteins have been implicated in oncogenesis and in several developmental processes, including regulation of cell fate and patterning during embryogenesis. This gene is involved in the development of the anterior-posterior axis in the female reproductive tract, and also plays a critical role in uterine smooth muscle patterning and maintenance of adult uterine function. Mutations in this gene are associated with Fuhrmann and Al-Awadi / Raas - Rothschild / Schinzel phocomelia syndromes.

### Product Info

<b>Amount :</b>	100 µg/vial
<b>Purification :</b>	Immunogen affinity purified.
<b>Content :</b>	Each vial contains 5mg BSA, 0.9mg NaCl, 0.2mg Na <sub>2</sub> HPO <sub>4</sub> , 0.05mg Na <sub>3</sub> N. Reconstitute : Add 0.2ml of distilled water will yield a concentration of 500ug/ml.
<b>Storage condition :</b>	At -20°C for one year. After reconstitution, at 4°C for one month. It can also be aliquotted and stored frozen at -20°C for a longer time. Avoid repeated freezing and thawing.

### Application Note

Western blot : 0.1-0.5 µg/ml; Immunohistochemistry(Paraffin-embedded Section) : 0.5-1 µg/ml

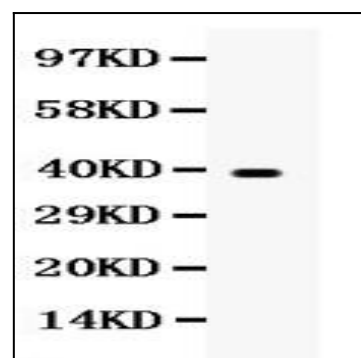


Figure 1: Anti-Wnt7a antibody(39-2011). Western blotting: Lanes: Anti Wnt7a(39-2011) at 0.5ug/ml. WB: HELA Whole Cell Lysate at 40ug. Predicted band size: 39 kDa. Observed band size: 39 kDa.

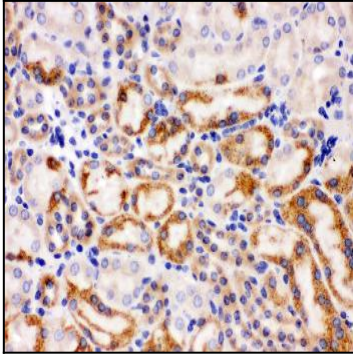


Figure 2: Anti-Wnt7a antibody(39-2011). IHC(P): Mouse Kidney Tissue.

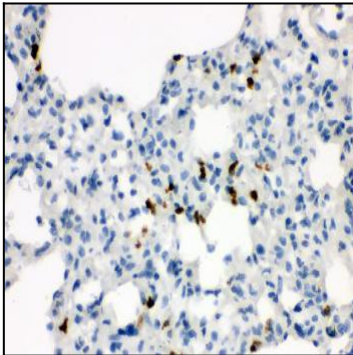


Figure 3: Anti-Wnt7a antibody(39-2011) . IHC(P): Rat Lung Tissue.

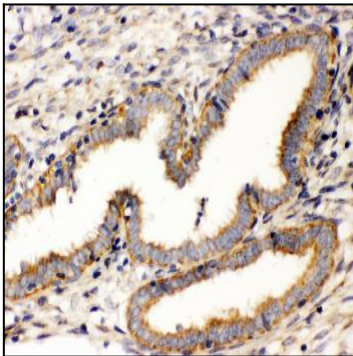


Figure 4: Anti-Wnt7a antibody(39-2011). IHC(P): Human Endometrial Carcinoma Tissue.