

## 39-2005: Anti-MBD2 Polyclonal Antibody

<b>Clonality :</b>	Polyclonal
<b>Application :</b>	WB
<b>Reactivity :</b>	Human
<b>Gene :</b>	MBD2
<b>Gene ID :</b>	8932
<b>Uniprot ID :</b>	Q9UBB5
<b>Format :</b>	Lyophilized
<b>Alternative Name :</b>	Methyl-CpG-binding domain protein 2; Demethylase; DMTase; Methyl-CpG-binding protein MBD2; MBD2
<b>Isotype :</b>	Rabbit IgG
<b>Immunogen Information :</b>	E.coli-derived human MBD2 recombinant protein (Position: W159-A411). Human MBD2 shares 98% amino acid (aa) sequence identity with mouse MBD2.

### Description

Methyl-CpG-binding domain protein 2 is a protein that in humans is encoded by the MBD2 gene. It is mapped to 18q21.2. Human proteins MECP2, MBD1, MBD2, MBD3, and MBD4 comprise a family of nuclear proteins related by the presence in each of a methyl-CpG-binding domain (MBD). Each of these proteins, with the exception of MBD3, is capable of binding specifically to methylated DNA. DNA methylation is the major modification of eukaryotic genomes and plays an essential role in mammalian development. The protein encoded by this gene may function as a mediator of the biological consequences of the methylation signal. It is also reported that this protein functions as a demethylase to activate transcription, as DNA methylation causes gene silencing.

### Product Info

<b>Amount :</b>	100 µg/vial
<b>Purification :</b>	Immunogen affinity purified.
<b>Content :</b>	Each vial contains 5mg BSA, 0.9mg NaCl, 0.2mg Na <sub>2</sub> HPO <sub>4</sub> , 0.05mg Na <sub>3</sub> N. Reconstitute : Add 0.2ml of distilled water will yield a concentration of 500ug/ml.
<b>Storage condition :</b>	At -20°C for one year. After reconstitution, at 4°C for one month. It can also be aliquotted and stored frozen at -20°C for a longer time. Avoid repeated freezing and thawing.

### Application Note

Western blot : 0.1-0.5 µg/ml

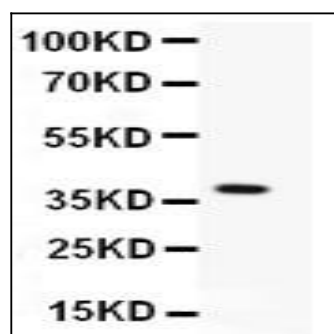


Figure 1: Anti-MBD2 antibody(39-2005). Western blotting: Lanes: Anti MBD2(39-2005) at 0.5ug/ml. WB: Recombinant Human MBD2 Protein 0.5ng. Predicted band size: 40 kDa. Observed band size: 40 kDa.

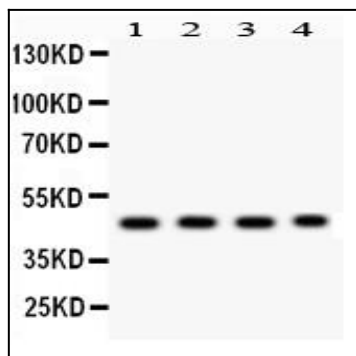


Figure 2: Anti-MBD2 antibody(39-2005). Western blotting: Lanes: Anti MBD2(39-2005) at 0.5ug/ml, Lane 1: SGC Whole Cell Lysate at 40ug, Lane 2: HELA Whole Cell Lysate at 40ug, Lane 3: JURKAT Whole Cell Lysate at 40ug, Lane 4: K562 Whole Cell Lysate at 40ug. Predicted band size: 47 kDa: Observed band size: 47 kDa.