

39-1093: Anti-Tau Monoclonal Antibody (Clone: TAU-2)

Clonality :	Monoclonal
Clone Name :	TAU-2
Application :	WB,IHC-P
Reactivity :	Human
Gene :	MAPT
Gene ID :	281296
Uniprot ID :	P29172
Alternative Name :	Microtubule-associated protein tau; Neurofibrillary tangle protein; Paired helical filament-tau; PHF-tau; Mapt; Mtapt, Tau
Isotype :	Mouse IgG1
Immunogen Information :	Bovine microtubule-associated proteins(MAPs).

Description

The microtubule-associated proteins (MAPs) coassemble with tubulin into microtubules in vitro. Microtubule-associated protein tau appears to be enriched in axons. Tau are composed of 352 to 441 amino acids. The isoforms differ from each other by the presence or absence of 29-amino acid or 58-amino acid inserts located in the N terminus and a 31-amino repeat located in the C terminus. tau is important in establishing and maintaining neuronal morphology and is a major component of the neurofibrillary tangles(NFTs) characteristic of Alzheimer's brain. Microtubule-associated protein tau(MTBT1) is mapped to chromosome 17q21.

Product Info

Amount :	100 µg/vial
Purification :	Ascites
Content :	Mouse ascites fluid, 1.2% sodium acetate, 2mg BSA, with 0.01mg NaN3 as preservative. Reconstitute : Add 1ml of PBS buffer will yield a concentration of 100ug/ml.
Storage condition :	At -20°C for one year. After reconstitution, at 4°C for one month. It can also be aliquotted and stored frozen at -20°C for a longer time. Avoid repeated freezing and thawing.

Application Note

Western blot : 0.5-1 µg/ml; Immunohistochemistry(Paraffin-embedded Section) : 1-2 µg/ml

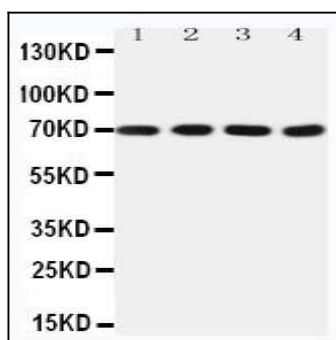


Figure 1: Anti-Tau antibody(monoclonal) 39-1093. Western blotting: Lane 1: Rat Brain Tissue Lysate, Lane 2: Rat Brain Tissue Lysate, Lane 3: Mouse Brain Tissue Lysate, Lane 4: Mouse Brain Tissue Lysate.