

39-1087: Monoclonal Antibody to Anti-Phosphoserine Antibody(Clone: PSR-45)(Discontinued)

Clonality :	Monoclonal
Clone Name :	PSR-45
Application :	WB
Reactivity :	Human
Gene :	Psph
Gene ID :	304429
Uniprot ID :	Q5M819
Alternative Name :	Phosphoserine phosphatase; PSP; PSPase; 3.1.3.3; O-phosphoserine phosphohydrolase; Psph
Isotype :	Mouse IgG1
Immunogen Information :	Phosphoserine conjugated to Keyhole Limpet Hemocyanin(KLH).

Description

Phosphoserine phosphatase fills an important role in the biosynthesis of serine from carbohydrates by catalyzing the last step, hydrolysis of O-phosphoserine. Phosphoserine phosphatase activity in lymphoblasts and fibroblasts was reduced to 25% of normal values. The human phosphoserine gene(PSP)is mapped to the pter-q22 region of chromosome 7.

Product Info

Amount :	100 µg/vial
Purification :	Ascites
Content :	Mouse ascites fluid, 1.2% sodium acetate, 2mg BSA, with 0.01mg NaN ₃ as preservative. Reconstitute : Add 1ml of PBS buffer will yield a concentration of 100ug/ml.
Storage condition :	At -20°C for one year. After reconstitution, at 4°C for one month. It can also be aliquotted and stored frozen at -20°C for a longer time. Avoid repeated freezing and thawing.

Application Note

Western blot : 1-2µg/ml;

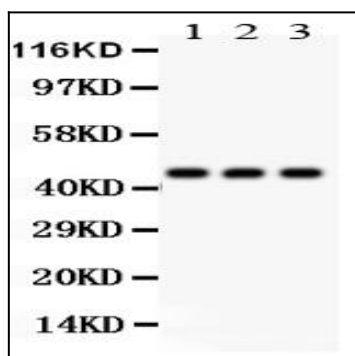


Figure 1: Anti-Phosphoserine antibody(monoclonal) 39-1087. Western blotting: Lanes: Anti Phosphoserine(39-1087) at 0.5ug/ml, Lane 1: Rat Kidney Tissue Lysate at 50ug, Lane 2: HELA Whole Cell Lysate at 40ug, Lane 3: MCF-7 Whole Cell Lysate at 40ug. Predicted band size: 45 kDa. Observed band size: 45 kDa.