

39-1083: Anti-Paxillin Monoclonal Antibody (Clone: PXC-10)

Clonality :	Monoclonal
Clone Name :	PXC-10
Application :	WB,ICC
Reactivity :	Human
Gene :	PXN
Gene ID :	5829
Uniprot ID :	P49023
Alternative Name :	Paxillin; Pxn
Isotype :	Mouse IgG1
Immunogen Information :	C-terminal part of recombinant chicken paxillin (amino acids 305-559).

Description

The paxillin gene can be alternatively spliced to include 1 of 2 alternative exons, generating beta and gamma isoforms. Paxillin is a 68-kDa focal adhesion protein that is phosphorylated on tyrosine residues in fibroblasts in response to transformation by v-src, treatment with platelet-derived growth factor, or cross-linking of integrins. The 68-kD protein(paxillin) is a cytoskeletal component that localizes to the focal adhesions at the ends of actin stress fibers in chicken embryo fibroblasts. It is also present in the focal adhesions of Madin-Darby bovine kidney(MDBK) epithelial cells but is absent, like talin, from the cell-cell adherens junctions of these cells.

Product Info

Amount :	100 µg/vial
Purification :	Ascites
Content :	Mouse ascites fluid, 1.2% sodium acetate, 2mg BSA, with 0.01mg NaN ₃ as preservative. Reconstitute : Add 1ml of PBS buffer will yield a concentration of 100ug/ml.
Storage condition :	At -20°C for one year. After reconstitution, at 4°C for one month. It can also be aliquotted and stored frozen at -20°C for a longer time. Avoid repeated freezing and thawing.

Application Note

Western blot : 1-2 µg/ml; Immunocytochemistry : 1 µg/ml

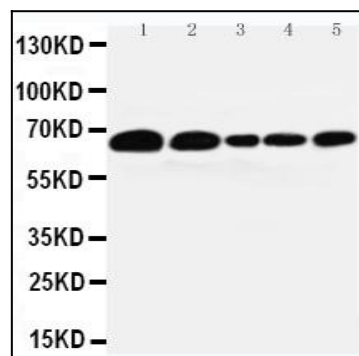


Figure 1: Anti-Paxillin antibody(monoclonal) 39-1083 . Western blotting: Lane 1: 293T Cell Lysate, Lane 2: HELA Cell Lysate, Lane 3: MCF-7 Cell Lysate, Lane 4: MM231 Cell Lysate, Lane 5: JURKAT Cell Lysate.