

39-1070: Anti-Myosin (Skeletal, Slow) Monoclonal Antibody (Clone: NOQ7.5.4D)

Clonality :	Monoclonal
Clone Name :	NOQ7.5.4D
Application :	WB
Reactivity :	Human
Gene :	MYH7
Gene ID :	4625
Uniprot ID :	P12883
Alternative Name :	Myosin-7; Myosin heavy chain 7; Myosin heavy chain slow isoform; MyHC-slow; Myosin heavy chain, cardiac muscle beta isoform; MyHC-beta; Myh7
Isotype :	Mouse IgG1
Immunogen Information :	Human skeletal muscle myosin purified from myofibrils.

Description

Myosin is composed of 2 heavy chains of about 200,000 daltons each and 4 light chains of about 20,000 daltons each. Skeletal Myosin(slow), also known as light chain 3(MYL3), mapped to 3p. Fodor et al.(1989) found that the MYL3 gene has 7 exons, the last of which is completely untranslated 3-prime sequence.

Product Info

Amount :	100 µg/vial
Purification :	Ascites
Content :	Mouse ascites fluid, 1.2% sodium acetate, 2mg BSA, with 0.01mg NaN ₃ as preservative. Reconstitute : Add 1ml of PBS buffer will yield a concentration of 100ug/ml.
Storage condition :	At -20°C for one year. After reconstitution, at 4°C for one month. It can also be aliquotted and stored frozen at -20°C for a longer time. Avoid repeated freezing and thawing.

Application Note

Western blot : 0.5-2µg/ml; Immunohistochemistry(Paraffin-embedded Section) : 1-2µg/ml

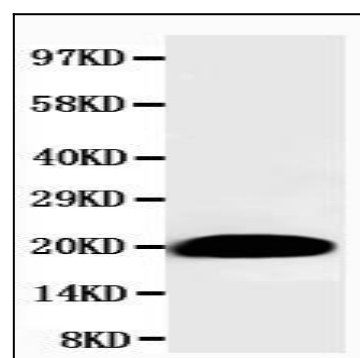


Figure 1: Anti-Myosin(Skeletal, Slow antibody(monoclonal) 39-1070. Western blotting: Rat Skeletal Muscle Tissue Lysate.