

39-1060: Anti-beta-Tubulin Monoclonal Antibody (Clone: TUB 2.1)

Clonality :	Monoclonal
Clone Name :	TUB 2.1
Application :	WB,IHC-P
Reactivity :	Human
Gene :	TUBB1
Gene ID :	81027
Uniprot ID :	Q9H4B7
Alternative Name :	Tubulin beta-1 chain; TUBB1
Isotype :	Mouse IgG1
Immunogen Information :	Tubulin from rat brain.

Description

Tubulin beta(TUBB) was derived from its corresponding mRNA with a molecular weight of about 55,000. TUBB gene contains 4 exons and located in the HLA class I region at 6p21.3. Paclitaxel resistance in non-small-cell lung cancer associated with beta-tubulin gene mutations.

Product Info

Amount :	100 µg/vial
Purification :	Ascites
Content :	Mouse ascites fluid, 1.2% sodium acetate, 2mg BSA, with 0.01mg NaN ₃ as preservative. Reconstitute : Add 1ml of PBS buffer will yield a concentration of 100ug/ml.
Storage condition :	At -20°C for one year. After reconstitution, at 4°C for one month. It can also be aliquotted and stored frozen at -20°C for a longer time. Avoid repeated freezing and thawing.

Application Note

Western blot : 2-10 µg/ml; Immunohistochemistry(Paraffin-embedded Section) : 0.5-10 µg/ml

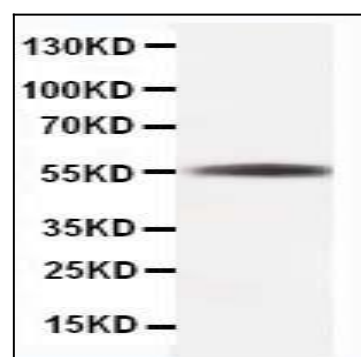


Figure 1: Anti-beta-Tubulin antibody(monoclonal) 39-1060. Western blotting: Rat Skeletal Muscle Tissue Lysate.

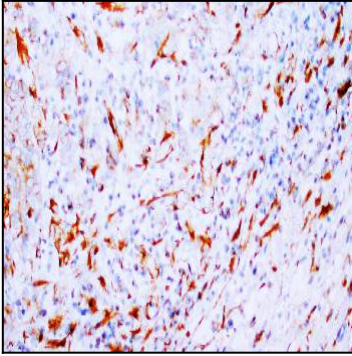


Figure 2: Anti-beta-Tubulin antibody(monoclonal) 39-1060. IHC(P): Human Mammary Cancer Tissue.