

## 39-1059: Anti-beta-HCG Monoclonal Antibody (Clone: PC-2)

<b>Clonality :</b>	Monoclonal
<b>Clone Name :</b>	PC-2
<b>Application :</b>	IHC-P
<b>Reactivity :</b>	Human
<b>Gene :</b>	CGB3
<b>Gene ID :</b>	1082
<b>Uniprot ID :</b>	P0DN86
<b>Alternative Name :</b>	Choriogonadotropin subunit beta; CG-beta; Chorionic gonadotropin chain beta; CGB; CGB3; CGB5; CGB7; CGB8
<b>Isotype :</b>	Mouse IgG1
<b>Immunogen Information :</b>	Purified human Chorionic Gonadotropin.

### Description

beta-HCG(beta-Human Chorionic Gonadotropin), also termed as Chorionic Gonadotropin, Beta Chain(CGB). It is encoded by a multigene cluster composed of six homologous sequences. And in the family of beta-containing glycoprotein hormones, beta-HCG is unique in that it contains an extension of 29 amino acids at its COOH end. beta-HCG is mapped to 19q13.32 and expressed in trophoblast and various malignant tumors promotes cellular motility in vivo. beta-HCG has a novel function in uterine adaptation to early pregnancy as well as in tumor development and underline the importance of HCG as an as yet unrecognized angiogenic factor.

### Product Info

<b>Amount :</b>	100 µg/vial
<b>Purification :</b>	Ascites
<b>Content :</b>	Mouse ascites fluid, 1.2% sodium acetate, 2mg BSA, with 0.01mg NaN <sub>3</sub> as preservative. Reconstitute : Add 1ml of PBS buffer will yield a concentration of 100ug/ml.
<b>Storage condition :</b>	At -20°C for one year. After reconstitution, at 4°C for one month. It can also be aliquotted and stored frozen at -20°C for a longer time. Avoid repeated freezing and thawing.

### Application Note

Immunohistochemistry(Paraffin-embedded Section) : 2µg/ml

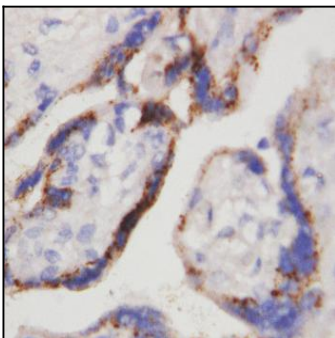


Figure 1: Anti-beta-HCG antibody(monoclonal) 39-1059. IHC(P): Human Placenta Tissue.