

## 39-1057: Anti-alpha-Tubulin Monoclonal Antibody (Clone: DM1A)

<b>Clonality :</b>	Monoclonal
<b>Clone Name :</b>	DM1A
<b>Application :</b>	WB,IHC-P
<b>Reactivity :</b>	Human
<b>Gene :</b>	TUBA1A
<b>Gene ID :</b>	7846
<b>Uniprot ID :</b>	Q71U36
<b>Alternative Name :</b>	Tubulin alpha-1A chain; Alpha-tubulin 3; Tubulin B-alpha-1; Tubulin alpha-3 chain; TUBA1A; TUBA3
<b>Isotype :</b>	Mouse IgG1
<b>Immunogen Information :</b>	Microtubules from chicken embryo brain.

### Description

Alpha-tubulin(b-alpha-1) mRNA is expressed only in brain with a molecular weight of about 55,000. The 3-prime UTR of b-alpha-1 is more than 80% homologous to the UTR of the rat brain alpha-tubulin gene, IL-alpha-T1. B-alpha-1 encodes a predicted 451-amino acid protein that is 100% identical to the rat homolog and differs by only 2 and 3 amino acids from the pig and chicken homologs, respectively.

### Product Info

<b>Amount :</b>	100 µg/vial
<b>Purification :</b>	Ascites
<b>Content :</b>	Mouse ascites fluid, 1.2% sodium acetate, 2mg BSA, with 0.01mg NaN <sub>3</sub> as preservative. Reconstitute : Add 1ml of PBS buffer will yield a concentration of 100ug/ml.
<b>Storage condition :</b>	At -20°C for one year. After reconstitution, at 4°C for one month. It can also be aliquotted and stored frozen at -20°C for a longer time. Avoid repeated freezing and thawing.

### Application Note

Western blot : 2-20 µg/ml; Immunohistochemistry(Paraffin-embedded Section) : 1-20 µg/ml

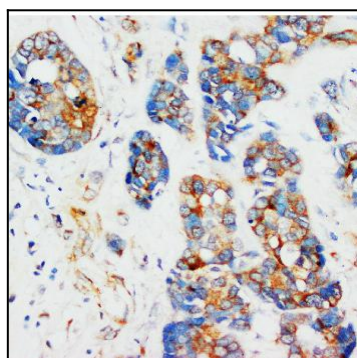


Figure 1: Anti-alpha-Tubulin antibody(monoclonal) 39-1057. IHC(P): Human Mammary Cancer Tissue.