

## 39-1053: Anti-Vinculin Monoclonal Antibody (Clone: hVIN-1)

<b>Clonality :</b>	Monoclonal
<b>Clone Name :</b>	hVIN-1
<b>Application :</b>	WB,IHC-F
<b>Reactivity :</b>	Human
<b>Gene :</b>	Vcl
<b>Gene ID :</b>	305679
<b>Uniprot ID :</b>	P85972
<b>Alternative Name :</b>	Vinculin ; Metavinculin ; Vcl
<b>Isotype :</b>	Mouse IgG1
<b>Immunogen Information :</b>	Human vinculin, purified from uterus.

### Description

Vinculin is a cytoskeletal protein associated with the cytoplasmic face of both cell-cell and cell-extracellular matrix adherens-type junctions, where it is thought to function as one of several interacting proteins involved in anchoring F-actin to the membrane. Both human and chicken embryo sequences of vinculin contain 1,066 amino acids and, furthermore, that the 2 proteins exhibit a high level of sequence identity(greater than 95%). Vinculin is mapped to 10q22.1-q23.

### Product Info

<b>Amount :</b>	100 µg/vial
<b>Purification :</b>	Ascites
<b>Content :</b>	Mouse ascites fluid, 1.2% sodium acetate, 2mg BSA, with 0.01mg NaN <sub>3</sub> as preservative. Reconstitute : Add 1ml of PBS buffer will yield a concentration of 100ug/ml.
<b>Storage condition :</b>	At -20°C for one year. After reconstitution, at 4°C for one month. It can also be aliquotted and stored frozen at -20°C for a longer time. Avoid repeated freezing and thawing.

### Application Note

Western blot : 1-2 µg/ml; Immunohistochemistry(Frozen Section) : 2-4 µg/ml

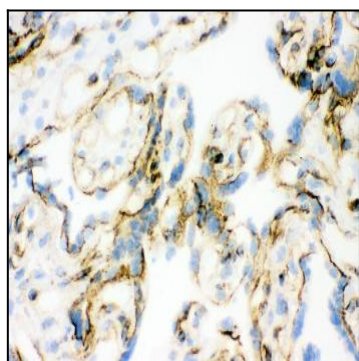


Figure 1: Anti-Vinculin antibody 39-1053. IHC(P), IHC(F): Human Placenta Tissue.

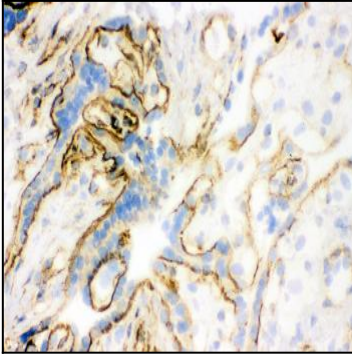


Figure 2: Anti-Vinculin antibody 39-1053 . IHC(P), IHC(F): Human Placenta Tissue.