

39-1050: Anti-S-100 (beta-subunit) Monoclonal Antibody (Clone: SH-B1)

Clonality :	Monoclonal
Clone Name :	SH-B1
Application :	IHC-P
Reactivity :	Human
Gene :	S100b
Gene ID :	25742
Uniprot ID :	P04631
Alternative Name :	Protein S100-B; S-100 protein beta chain; S-100 protein subunit beta; S100 calcium-binding protein B; S100b
Isotype :	Mouse IgG1
Immunogen Information :	Bovine brain S-100b.

Description

S100 protein is a 21,000-Da component first isolated from brain by Moore(1965). Immunocytochemical studies demonstrated that S100 protein is produced by a wide variety of normal and neoplastic cells of mesodermal, neuroectodermal, and epithelial origin(Herrera et al., 1988). The S100 molecule is a dimer; thus there are 3 forms of S100: alpha-alpha, known as S-100a(0); alpha-beta, known as S-100a; and beta-beta, known as S-100b. S100 genes are clustered on human chromosome 1q21. S-100 protein expression by primary and metastatic adenocarcinomas.

Product Info

Amount :	100 µg/vial
Purification :	Ascites
Content :	Mouse ascites fluid, 1.2% sodium acetate, 2mg BSA, with 0.01mg NaN ₃ as preservative. Reconstitute : Add 1ml of PBS buffer will yield a concentration of 100ug/ml.
Storage condition :	At -20°C for one year. After reconstitution, at 4°C for one month. It can also be aliquotted and stored frozen at -20°C for a longer time. Avoid repeated freezing and thawing.

Application Note

Immunohistochemistry(Paraffin-embedded Section) : 1-2µg/ml

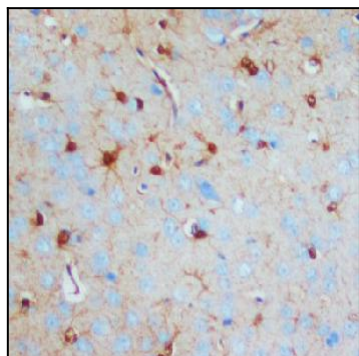


Figure 1: Anti-S-100(beta-subunit) antibody(monoclonal) 39-1050. IHC(P): Rat Brain Tissue Lysate.