

## 39-1038: Anti-Gelsolin Monoclonal Antibody (Clone: GS-2C4)

<b>Clonality :</b>	Monoclonal
<b>Clone Name :</b>	GS-2C4
<b>Application :</b>	WB,IHC-P,IHC-F
<b>Reactivity :</b>	Human
<b>Gene :</b>	Gsn
<b>Gene ID :</b>	296654
<b>Uniprot ID :</b>	Q68FP1
<b>Alternative Name :</b>	Gelsolin; Actin-depolymerizing factor; ADF; Brevin; Gsn
<b>Isotype :</b>	Mouse IgG1
<b>Immunogen Information :</b>	Human plasma gelsolin.

### Description

Gelsolin, a protein of leukocytes, platelets, and other cells, severs actin filaments in the presence of submicromolar calcium, thereby solating cytoplasmic actin gels. A gelsolin variant with 23 more N-terminal amino acids is a plasma component probably involved in the clearance of actin, the most abundant human protein, from the circulation. Gelsolin is located in 9q34. Plasma and cytoplasmic gelsolins are encoded by a single gene and contain a duplicated actin-binding domain.

### Product Info

<b>Amount :</b>	100 µg/vial
<b>Purification :</b>	Ascites
<b>Content :</b>	Mouse ascites fluid, 1.2% sodium acetate, 2mg BSA, with 0.01mg NaN <sub>3</sub> as preservative. Reconstitute : Add 1ml of PBS buffer will yield a concentration of 100ug/ml.
<b>Storage condition :</b>	At -20°C for one year. After reconstitution, at 4°C for one month. It can also be aliquotted and stored frozen at -20°C for a longer time. Avoid repeated freezing and thawing.

### Application Note

Western blot : 0.5-1 µg/ml; Immunohistochemistry(Paraffin-embedded Section) : 1-2 µg/ml;  
Immunohistochemistry(Frozen Section) : 1-2 µg/ml

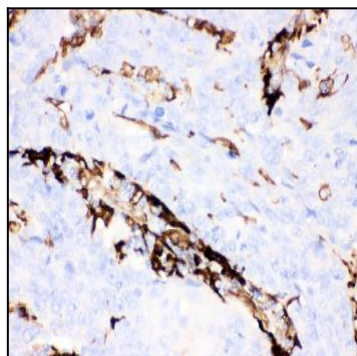


Figure 1: Anti-Gelsolin monoclonal antibody(39-1038). IHC(P): Human Lung Cancer Tissue.

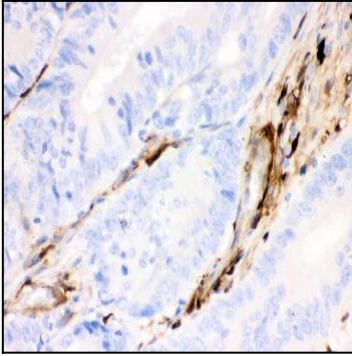


Figure 2: Anti-Gelsolin monoclonal antibody(39-1038). IHC(P): Human Intestinal Cancer Tissue.