

39-1034: Monoclonal Antibody to Anti-Episialin, EMA Antibody(Clone: GP1.4)

Clonality :	Monoclonal
Clone Name :	GP1.4
Reactivity :	Human
Gene :	MUC1
Gene ID :	4582
Uniprot ID :	P15941
Alternative Name :	Mucin-1; MUC-1; Breast carcinoma-associated antigen DF3; Cancer antigen 15-3; CA 15-3; Carcinoma-associated mucin; Episialin; H23AG; Krebs von den Lungen-6; KL-6; PEMT; Peanut-reactive urinary mucin; PUM
Isotype :	Mouse IgG1
Immunogen Information :	Human milk fat globule membranes.

Description

MUC1 is a large cell surface mucin glycoprotein expressed by most glandular and ductal epithelial cells and some hematopoietic cell lineages. It is expressed on most secretory epithelium, including mammary gland and some hematopoietic cells. It is expressed abundantly in lactating mammary glands and overexpressed abundantly in >90% breast carcinomas and metastases. Transgenic MUC1 has been shown to associate with all four cebB receptors and localize with erbB1(EGFR) in lactating glands. The MUC1 gene contains seven exons and produces several different alternatively spliced variants. The major expressed form of MUC1 uses all seven exons and is a type I transmembrane protein with a large extracellular tandem repeat domain. The tandem repeat domain is highly O glycosylated and alterations in glycosylation have been shown in epithelial cancer cells.

Product Info

Amount :	100 µg/vial
Purification :	Ascites
Content :	Mouse ascites fluid, 1.2% sodium acetate, 2mg BSA, with 0.01mg NaN3 as preservative. Reconstitute : Add 1ml of PBS buffer will yield a concentration of 100ug/ml.
Storage condition :	At -20°C for one year. After reconstitution, at 4°C for one month. It can also be aliquotted and stored frozen at -20°C for a longer time. Avoid repeated freezing and thawing.

Application Note

Immunohistochemistry(Paraffin-embedded Section) : 2-4 $\frac{1}{4}$ g/ml; Immunohistochemistry(Frozen Section) : 2-4 $\frac{1}{4}$ g/ml

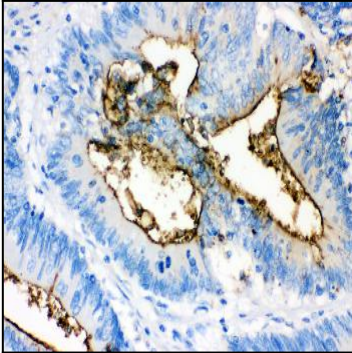


Figure 1: Anti-Epsialin, EMA monoclonal antibody(39-1034). IHC(P): Human Intestinal Cancer Tissue.

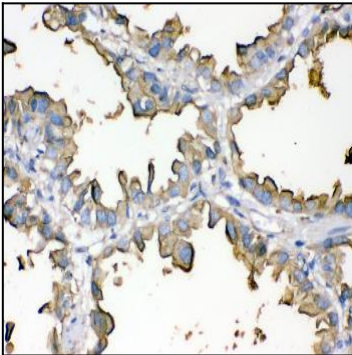


Figure 2: Anti-Epsialin, EMA monoclonal antibody(39-1034). IHC(P): Human Lung Cancer Tissue.

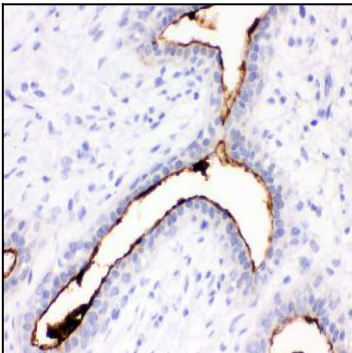


Figure 3: Anti-Epsialin, EMA monoclonal antibody(39-1034). IHC(P): Human Mammary Cancer Tissue.