

## 39-1031: Anti-Desmin Monoclonal Antibody (Clone: DE-U-10)

<b>Clonality :</b>	Monoclonal
<b>Clone Name :</b>	DE-U-10
<b>Application :</b>	WB
<b>Reactivity :</b>	Human
<b>Gene :</b>	Des
<b>Gene ID :</b>	64362
<b>Uniprot ID :</b>	P48675
<b>Alternative Name :</b>	Desmin; Des
<b>Isotype :</b>	Mouse IgG1
<b>Immunogen Information :</b>	Desmin from pig stomach.

### Description

Desmin belongs to the type III family of intermediate filaments, a class of cytoskeletal elements. DES gene encodes desmin, a muscle-specific cytoskeletal protein found in smooth, cardiac, and heart muscles. Tidball(1992) found that desmin was codistributed with actin thin filaments within the cellular processes of myotendinous junctions in frog skeletal muscle. DES gene contains 9 exons and spans about 8.4 kb. By in situ hybridization, Viegas-Pequignot et al.(1989) localized the gene to 2q35. Desmin mutation responsible for idiopathic dilated cardiomyopathy.

### Product Info

<b>Amount :</b>	100 µg/vial
<b>Purification :</b>	Ascites
<b>Content :</b>	Mouse ascites fluid, 1.2% sodium acetate, 2mg BSA, with 0.01mg NaN <sub>3</sub> as preservative. Reconstitute : Add 1ml of PBS buffer will yield a concentration of 100ug/ml.
<b>Storage condition :</b>	At -20°C for one year. After reconstitution, at 4°C for one month. It can also be aliquotted and stored frozen at -20°C for a longer time. Avoid repeated freezing and thawing.

### Application Note

Western blot : 2µg/ml; Immunohistochemistry(Paraffin-embedded Section) : 2-4µg/ml

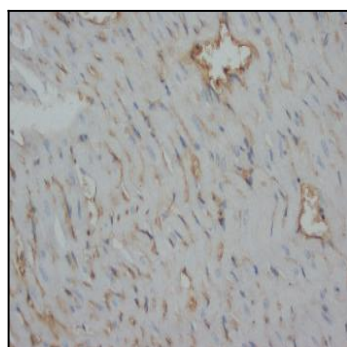


Figure 1: Anti-Desmin monoclonal antibody(39-1031). IHC(P): Rat Cardiac Muscle Tissue.

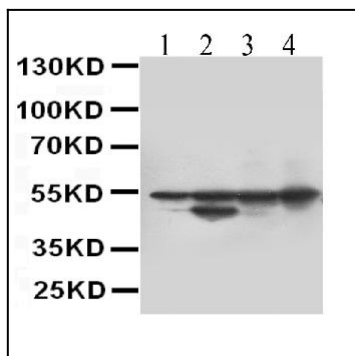


Figure 2: Anti-Desmin monoclonal antibody(39-1031). Western blotting: Lanes: Anti Desmin(39-1031) at 0.5 ug/ml. Lane 1: Rat Skeletal Muscle Tissue Lysate at 50ug, Lane 2: Rat Cardiac Muscle Tissue Lysate at 50ug, Lane 3: Mouse Skeletal Muscle Tissue Lysate at 50ug, Lane 4: Mouse Cardiac Muscle Tissue Lysate at 50ug. Predicted band size: 53 kDa: Observed band size: 53 kDa.