

39-1012: Anti-Cathepsin D Monoclonal Antibody (Clone: CTD-19)

Clonality :	Monoclonal
Clone Name :	CTD-19
Application :	WB,IHC-P
Reactivity :	Human
Gene :	CTSD
Gene ID :	1509
Uniprot ID :	P07339
Alternative Name :	CPSD
Isotype :	Mouse IgG2a
Immunogen Information :	Human liver cathepsin D.

Description

Cathepsin D is one of the lysosomal proteinases. It is ubiquitously expressed and is involved in proteolytic degradation, cell invasion, and apoptosis. Cathepsin D is mapped to chromosome 11. The amino acid sequence predicted from the cDNA sequence shows that human cathepsin D consists of 412 amino acids with 20 and 44 amino acids in a pre- and a prosegment, respectively.

Product Info

Amount :	100 µg/vial
Purification :	Ascites
Content :	Mouse ascites fluid, 1.2% sodium acetate, 2mg BSA, with 0.01mg NaN ₃ as preservative. Reconstitute : Add 1ml of PBS buffer will yield a concentration of 100ug/ml.
Storage condition :	At -20°C for one year. After reconstitution, at 4°C for one month. It can also be aliquotted and stored frozen at -20°C for a longer time. Avoid repeated freezing and thawing.

Application Note

Western blot : 0.5-1 µg/ml; Immunohistochemistry(Paraffin-embedded Section) : 1-2 µg/ml

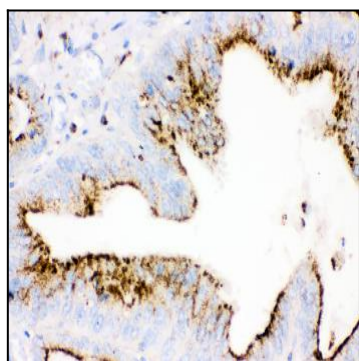


Figure 1: Anti-Cathepsin D antibody(39-1012). IHC(P): Human Intestinal Cancer Tissue.

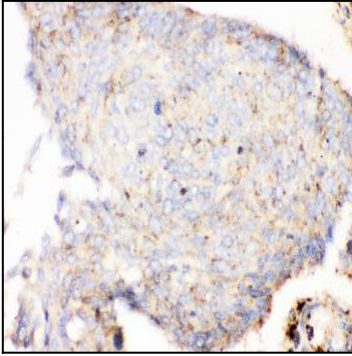


Figure 2: Anti-Cathepsin D antibody(39-1012). IHC(P): Human Lung Cancer Tissue.

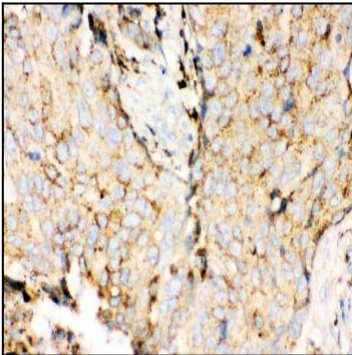


Figure 3: Anti-Cathepsin D antibody(39-1012). IHC(P): Human Mammary Cancer Tissue.