

## 39-1011: Anti-Catenin gamma (Plakoglobin) Monoclonal Antibody (Clone: 15F11)

<b>Clonality :</b>	Monoclonal
<b>Clone Name :</b>	15F11
<b>Application :</b>	WB,IHC-F,ICC
<b>Reactivity :</b>	Human
<b>Gene :</b>	Jup
<b>Gene ID :</b>	81679
<b>Uniprot ID :</b>	Q6P0K8
<b>Alternative Name :</b>	Junction plakoglobin; Jup
<b>Isotype :</b>	Mouse IgG1
<b>Immunogen Information :</b>	Recombinant chicken plakoglobin.

### Description

Junction Plakoglobin(JUP) ,also knows as catenin gamma, is a major cytoplasmic protein that occurs in a soluble and a membrane-associated form and is the only known constituent common to the submembranous plaques of both kinds of adhering junctions, the desmosomes and the intermediate junctions. It is a component of the cadherin-catenin complex, which is predominantly localized where actin filaments anchor in adherens junctions of epithelial cells. The human plakoglobin gene localizes on chromosome 17q21. Gamma-catenin is regulated by the APC tumor suppressor and its oncogenic activity is distinct from that of beta-catenin.

### Product Info

<b>Amount :</b>	100 µg/vial
<b>Purification :</b>	Ascites
<b>Content :</b>	Mouse ascites fluid, 1.2% sodium acetate, 2mg BSA, with 0.01mg NaN <sub>3</sub> as preservative. Reconstitute : Add 1ml of PBS buffer will yield a concentration of 100ug/ml.
<b>Storage condition :</b>	At -20°C for one year. After reconstitution, at 4°C for one month. It can also be aliquotted and stored frozen at -20°C for a longer time. Avoid repeated freezing and thawing.

### Application Note

Western blot : 2Å¼g/ml; Immunohistochemistry(Frozen Section) : 4Å¼g/ml; Immunocytochemistry : 1Å¼g/ml

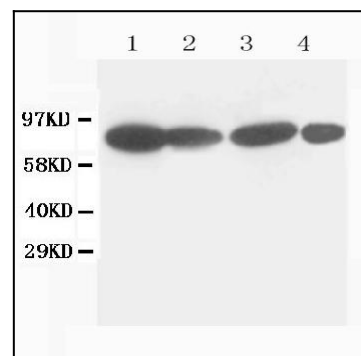


Figure 1: Anti-Catenin gamma(Plakoglobin) monoclonal antibody(39-1011). Western blotting: Lane 1: MCF-7 Cell Lysate, Lane 2: HELA Cell Lysate , Lane 3: MM231 Cell Lysate, Lane 4: HT1080 Cell Lysate.