

## 39-1006: Anti-Calbindin-D Monoclonal Antibody (Clone: CB-955)

<b>Clonality :</b>	Monoclonal
<b>Clone Name :</b>	CB-955
<b>Application :</b>	WB,IHC-P
<b>Reactivity :</b>	Human
<b>Gene :</b>	Calb1
<b>Gene ID :</b>	83839
<b>Uniprot ID :</b>	P07171
<b>Alternative Name :</b>	Calbindin; Calbindin D28; D-28K; Spot 35 protein; Vitamin D-dependent calcium-binding protein, avian-type; Calb1
<b>Isotype :</b>	Mouse IgG1
<b>Immunogen Information :</b>	Bovine kidney calbindin-D

### Description

The human calbindin D28k(CALB1) is a calcium-binding protein belonging to the troponin C superfamily. It was originally described as a 27-kD protein induced by vitamin D in the duodenum of the chick. Parmentier et al.(1991) mapped the CALB1 gene to 8q21.3-q22.1 by in situ hybridization.

### Product Info

<b>Amount :</b>	100 µg/vial
<b>Purification :</b>	Ascites
<b>Content :</b>	Mouse ascites fluid, 1.2% sodium acetate, 2mg BSA, with 0.01mg NaN3 as preservative. Reconstitute : Add 1ml of PBS buffer will yield a concentration of 100ug/ml.
<b>Storage condition :</b>	At -20°C for one year. After reconstitution, at 4°C for one month. It can also be aliquotted and stored frozen at -20°C for a longer time. Avoid repeated freezing and thawing.

### Application Note

Western blot : 0.5-1 µg/ml; Immunohistochemistry(Paraffin-embedded Section) : 1-2 µg/ml

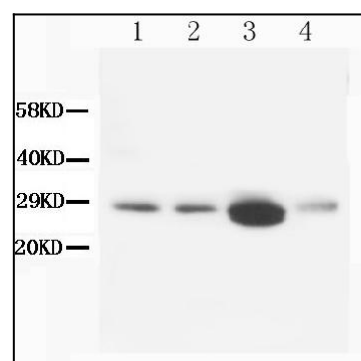


Figure 1: Anti-Calbindin-D antibody monoclonal(39-1006). Western blotting: Lane 1: Rat Brain Tissue Lysate, Lane 2: Rat Brain Tissue Lysate , Lane 3: Rat Kidney Tissue Lysate , Lane 4: Rat Lung Tissue Lysate.

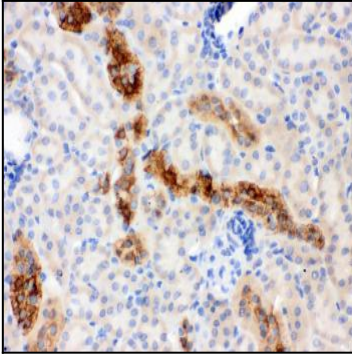


Figure 2: Anti-Calbindin-D antibody monoclonal(39-1006). IHC(P): Mouse Kidney Tissue.

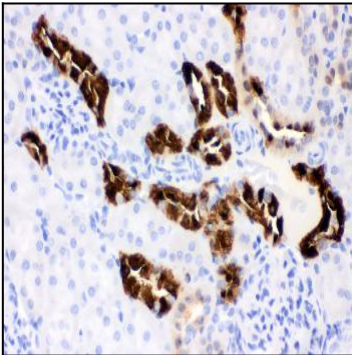


Figure 3: Anti-Calbindin-D antibody monoclonal(39-1006). IHC(P): Rat Kidney Tissue.

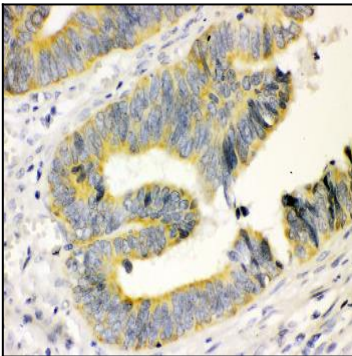


Figure 4: Anti-Calbindin-D antibody monoclonal(39-1006). IHC(P): Human Intestinal Cancer Tissue.

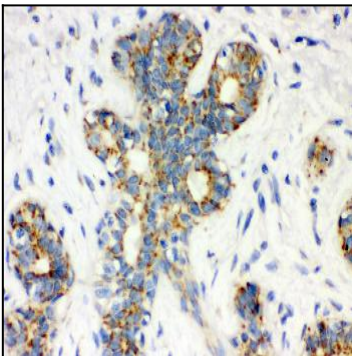


Figure 5: Anti-Calbindin-D antibody monoclonal(39-1006). IHC(P): Human Mammary Cancer Tissue.