

## 39-1004: Anti-Bcl-2 Monoclonal Antibody (Clone: Bcl-2-100)

<b>Clonality :</b>	Monoclonal
<b>Clone Name :</b>	Bcl-2-100
<b>Application :</b>	WB,IHC-P,IHC-F,ICC
<b>Reactivity :</b>	Human
<b>Gene :</b>	Bcl2
<b>Gene ID :</b>	24224
<b>Uniprot ID :</b>	P49950
<b>Alternative Name :</b>	Apoptosis regulator Bcl-2; Bcl2; Bcl-2
<b>Isotype :</b>	Mouse IgG1
<b>Immunogen Information :</b>	Synthetic peptide corresponding to residues 41-54 of the bcl-2 protein, conjugated to thyroglobulin.

### Description

Immunoreactive BCL2 protein in the neoplastic cells of almost all follicular lymphomas whereas no BCL2 protein was detected in follicles affected by nonneoplastic processes or in normal lymphoid tissue. Every tumor with molecular-genetic evidence of t(14;18) translocation expressed detectable levels of BCL2 protein, regardless of whether the breakpoint was located in or at a distance from the BCL2 gene. Overexpression of BCL2 blocks the apoptotic death of a pro-B-lymphocyte cell line.

### Product Info

<b>Amount :</b>	100 µg/vial
<b>Purification :</b>	Ascites
<b>Content :</b>	Mouse ascites fluid, 1.2% sodium acetate, 2mg BSA, with 0.01mg NaN <sub>3</sub> as preservative. Reconstitute : Add 1ml of PBS buffer will yield a concentration of 100ug/ml.
<b>Storage condition :</b>	At -20°C for one year. After reconstitution, at 4°C for one month. It can also be aliquotted and stored frozen at -20°C for a longer time. Avoid repeated freezing and thawing.

### Application Note

Western blot : 1-2 µg/ml; Immunohistochemistry(Paraffin-embedded Section) : 0.4-1 µg/ml;  
Immunohistochemistry(Frozen Section) : 0.4-1 µg/ml; Immunocytochemistry : 1 µg/ml

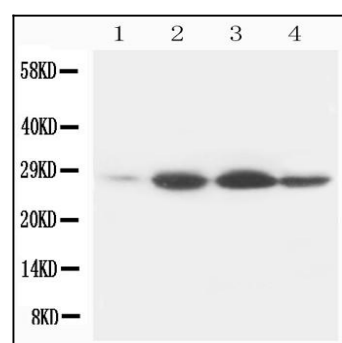


Figure 1: Anti-Bcl-2 monoclonal antibody(39-1004). Western blotting: Lane 1: Rat Heart Tissue Lysate , Lane 2: Rat Spleen Tissue Lysate , Lane 3: Rat Small Intestine Tissue Lysate , Lane 4: Rat Liver Tissue Lysate.

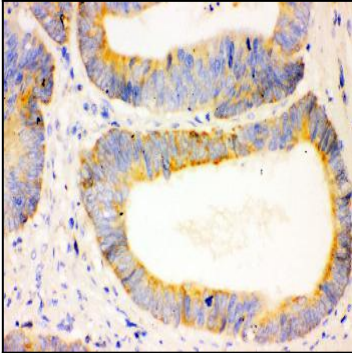


Figure 2: Anti-Bcl-2 monoclonal antibody(39-1004). IHC(P): Human Intestinal Cancer Tissue.

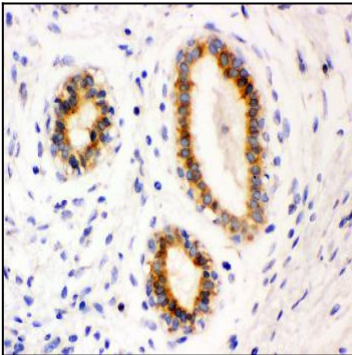


Figure 3: Anti-Bcl-2 monoclonal antibody(39-1004). IHC(P): Human Mammary Cancer Tissue.