

## 10-3005-NALE: NALE™ Monoclonal Antibody to TLR8/CD288 (Clone: ABM15F6)

<b>Clonality :</b>	Monoclonal
<b>Clone Name :</b>	ABM15F6
<b>Application :</b>	IHC,FACS
<b>Reactivity :</b>	Human
<b>Gene :</b>	TLR8
<b>Gene ID :</b>	51311
<b>Uniprot ID :</b>	Q9NR97
<b>Format :</b>	Azide Free,Purified
<b>Alternative Name :</b>	TLR8,UNQ249/PRO286
<b>Isotype :</b>	Mouse IgG1 Kappa
<b>Immunogen Information :</b>	A partial length recombinant TLR8 protein (amino acids 750-900) was used as the immunogen for this antibody.

### Description

Toll like receptor 8, also known as CD288, is a member of TLR family. It plays an important role in sensing phagocytosed pathogen. TLR8 recognizes ssRNA and recruits MyD88 and leads to the activation of transcription factor NF-kappa B. TLR8 has two splice variants, viz., TLR8v1 and TLR8v2 and one missense variant, termed G or A1G allele of TLR8. TLR8v1 has additional 19 amino acids in the N-terminus. It is predominantly expressed in lung and peripheral blood leukocytes.

### Product Info

<b>Amount :</b>	100 µg
<b>Purification :</b>	Protein G Chromatography
<b>Content :</b>	25 µg in 50 µl/100 µg in 200 µl PBS containing 0.05% BSA.
<b>Storage condition :</b>	Store the antibody at 4°C, stable for 6 months. For long-term storage, store at -20°C. Avoid repeated freeze and thaw cycles.

### Application Note

Immunohistochemical analysis: 5 µg/ml;FACS analysis: 2 µg/10<sup>6</sup> cells

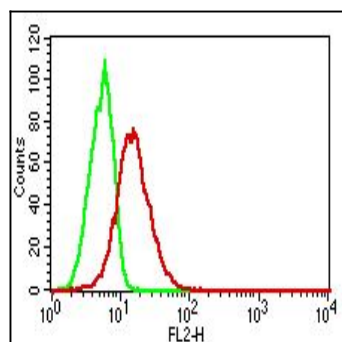


Fig-1: Intracellular flow analysis of hTLR8 in U937 using 2 µg/10<sup>6</sup> cells of hTLR8 antibody (Clone: ABM15F6). Green represents isotype control; red represents anti-hTLR8 antibody. Goat anti-mouse PE conjugate was used as secondary.

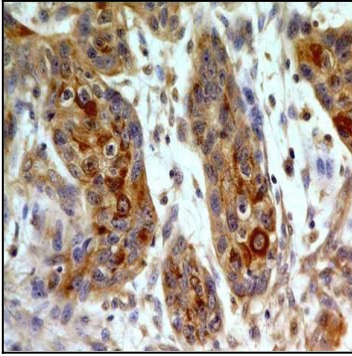


Fig-2: Immunohistochemical analysis of TLR8 in small cell carcinoma of esophagus using TLR8 antibody (Clone: ABM15F6) at 5 µg/ml.