

10-3015-NALE: NALE™ Monoclonal Antibody to TLR7 (Clone: ABM2C27)

Clonality :	Monoclonal
Clone Name :	ABM2C27
Application :	IHC,FACS
Reactivity :	Human
Gene :	TLR7
Gene ID :	51284
Uniprot ID :	Q9NYK1
Format :	Azide Free,Purified
Alternative Name :	TLR7,UNQ248/PRO285
Isotype :	Mouse IgG1 Kappa
Immunogen Information :	A partial length recombinant human TLR7 protein (amino acids 500-900) was used as the immunogen for this antibody.

Description

TLR7 (Toll-like receptor 7) is a member of the Toll-like receptor (TLR) family. TLR7 is a nucleotide-sensing TLR which is activated by single-stranded RNA; which plays a fundamental role in pathogen recognition and activation of innate immunity. TLR7 controls host immune response against pathogens through recognition of molecular patterns specific to microorganisms. TLR7 interacts with MYD88 via their respective TIR domains and also interacts with UNC93B1. Post-translational modifications and glycosylation occur in TLR7. TLR7 detected in brain, placenta, spleen, stomach, small intestine, lungs and plasmacytoid pre-dendritic cells.

Product Info

Amount :	100 µg
Purification :	Protein G Chromatography
Content :	25 µg in 50 µl/100 µg in 200 µl PBS containing no Azide and low endotoxin (0.1 EU/1ug).
Storage condition :	Store the antibody at 4°C, stable for 6 months. For long-term storage, store at -20°C. Avoid repeated freeze and thaw cycles.

Application Note

FACS analysis: 0.5 µg/10⁶ cells, Immunohistochemical analysis: 5 µg/ml

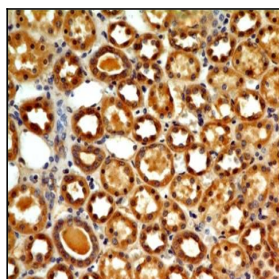


Fig-1 : Immunohistochemical analysis of TLR7 in human Kidney tissue using TLR7 antibody (Clone: ABM2C27) at 5 µg/ml.

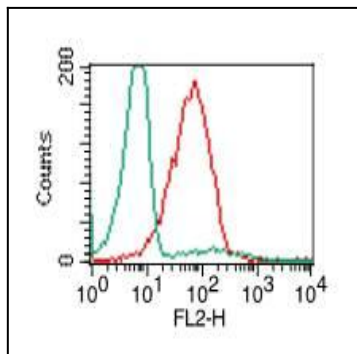


Fig-2: Intracellular flow analysis of TLR7 in PBMC (Lymphocyte) using $0.5 \mu\text{g}/10^6$ cells of TLR7 antibody (Clone: ABM2C27). Green represents isotype control; red represents anti-TLR7 antibody. Goat anti-mouse PE conjugate was used as secondary.

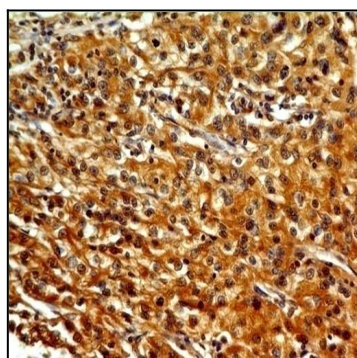


Fig-3: Immunohistochemical analysis of TLR7 in Renal Cell Carcinoma using TLR7 antibody (Clone: ABM2C27) at $5 \mu\text{g}/\text{ml}$.

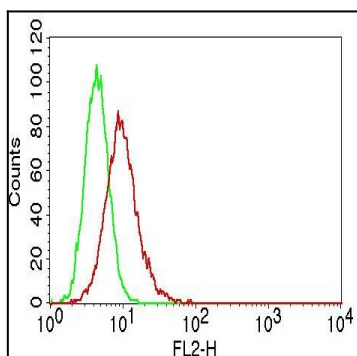


Fig-4: Intracellular flow analysis of TLR7 in Raji cells using $0.5 \mu\text{g}/10^6$ cells of TLR7 antibody (Clone: ABM2C27). Green represents isotype control; red represents anti-TLR7 antibody. Goat anti-mouse PE conjugate was used as secondary antibody.