

10-2001-NALE: NALE™ Recombinant Human PD-1 rabbit monoclonal Antibody (Clone: ABMRR01) (No Azide Low Endotoxin)

Clonality :	Monoclonal
Clone Name :	ABMRR01
Application :	Functional Assay,FACS,WB
Reactivity :	Human
Gene :	PDCD1
Gene ID :	5133
Uniprot ID :	Q15116
Format :	Azide Free,Purified
Alternative Name :	PDCD1, PD1, CD279
Isotype :	Rabbit IgG

Description

PDCD-1 (programmed cell death-1 protein), also designated CD279, is a type I transmembrane receptor and a member of the immunoglobulin gene superfamily. It is expressed on activated T-cells, B-cells, and myeloid cells. Anti-PDCD-1 is a marker of angioimmunoblastic lymphoma and suggests a unique cell of origin for this neoplasm. Unlike CD10 and BCL6, PDCD-1 is expressed by few B-cells, so anti-PDCD-1 may be a more specific and useful diagnostic marker in angioimmunoblastic lymphoma. In addition, PDCD-1 expression provides evidence that angioimmunoblastic lymphoma is a neoplasm derived from germinal center-associated T-cells.

Product Info

Amount :	100 µg
Purification :	Protein A Chromatography
Content :	100 µg in 200 µl PBS containing 0.05% BSA
Storage condition :	Store the antibody at 4°C, stable for 6 months. For long-term storage, store at -20°C. Avoid repeated freeze and thaw cycles.

Application Note

FACS: 0.5-1 µg/10⁶, WB: 1-2 µg/ml, FA: EC₅₀ = 0.79 µg/ml

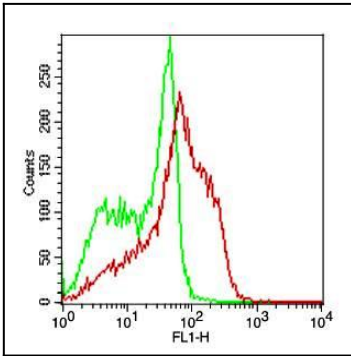


Fig-1: Cell surface flow analysis of Rabbit recombinant hPD-1 antibody in PHA treated PBMC (Lymphocyte gated) using $0.5 \mu\text{g}/10^6$ cells of Rabbit recombinant hPD-1 antibody (Clone:ABMRR01). Green represent isotype control and red represent Rabbit recombinant hPD-1 antibody. Goat anti rabbit FITC conjugate was used as secondary antibody.

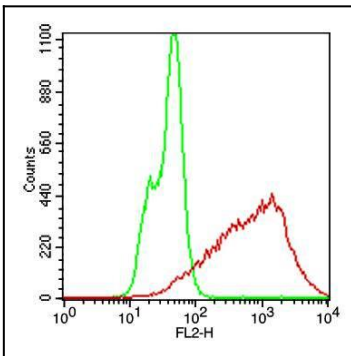


Fig-2: Cell surface flow analysis of Rabbit recombinant hPD-1 antibody in CHO-PD1 transfected cell line using $0.2 \mu\text{g}/10^6$ cells of Rabbit recombinant hPD-1 antibody (Clone: ABMRR01). Green represent CHO/K1 cells and red represent Rabbit recombinant hPD-1 antibody. Goat anti rabbit PE conjugate was used as secondary antibody.

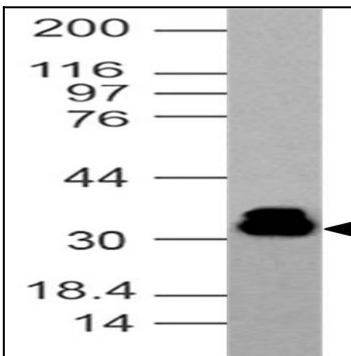


Fig-3: Western blot analysis of Rabbit recombinant hPD-1 antibody. Anti-Rabbit recombinant hPD-1 antibody was tested at $1 \mu\text{g}/\text{ml}$ in Jurkat cell lysate

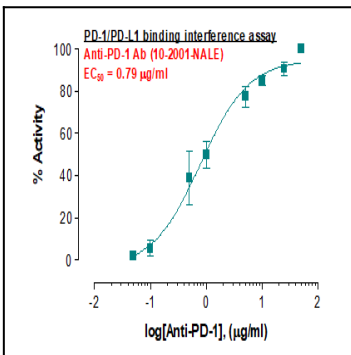


Fig-4: Functional activity of NALE™ Recombinant hPD-1 rabbit monoclonal antibody was evaluated using the Jurkat-PD-1/NFAT cell- and CHO/PD-L1 inducer cell-based assay system, in which the PD-1 antibody interferes with the binding between PD-1 and PD-L1 in a dose response manner, leading to the NFAT reporter gene induction.