

10-7599-NALE: NALE™ Monoclonal antibody to hPD-L1 (Clone: ABM5F25) (No Azide Low Endotoxin)

Clonality :	Monoclonal
Clone Name :	ABM5F25
Application :	IHC,FACS,WB
Reactivity :	Human
Gene :	CD274
Gene ID :	29126
Uniprot ID :	Q9NZQ7
Format :	Azide Free,Purified
Alternative Name :	CD274,B7H1,PDCD1L1,PDCD1LG1,PDL1
Isotype :	Mouse IgG2b Kappa
Immunogen Information :	A partial length recombinant protein of PD-L1 (amino acid 13-224) was used as the immunogen for this antibody.

Description

PD-L1 (CD274/B7-H1) is a critical membrane-bound costimulatory molecule belonging to the B7 superfamily that inhibits immune responses through its receptor, PD-1. PD-L1 plays a key role in the pathogenesis of inflammatory diseases (programmed death 1). It is widely expressed in the mononuclear phagocyte system (MPS), may co-stimulate T cells, and regulates inflammatory responses. PD-L1 exerts inflammation regulatory functions via a negative co-stimulatory effect on T cell functions to inhibit cytokine secretion, facilitates apoptosis of activated T cells, and induces T cell anergy. Aberrant expression and dysregulation of CD274 have been reported during bacterial infection, inflammation, and in numerous autoimmune diseases.

Product Info

Amount :	100 µg
Purification :	Protein G Chromatography
Content :	25 µg in 50 µl/100 µg in 200 µl PBS containing 0.05% BSA. Azide free, low endotoxin.
Storage condition :	Store the antibody at 4°C; stable for 6 months. For long-term storage; store at -20°C. Avoid repeated freeze and thaw cycles.

Application Note

FACS analysis: 0.5-1 µg/10⁶ cells; Western blot analysis: 2-4 µg/ml; Immunohistochemical analysis: 5-10 µg/ml

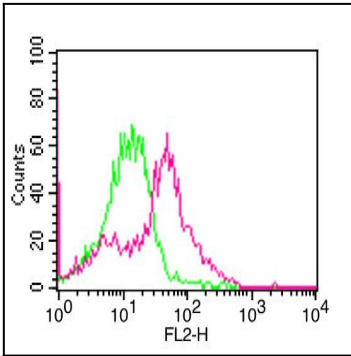


Fig-1: Cell Surface flow analysis of PD-L1 in 3 day-PHA treated human PBMC cells using $1 \mu\text{g}/10^6$ cells of PD-L1 antibody (Clone: ABM5F25). Green represents isotype control; red represents anti-PD-L1 antibody. Goat anti-mouse PE conjugate was used as secondary antibody.

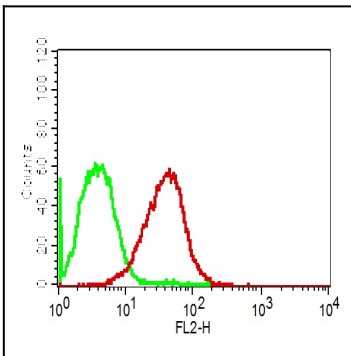


Fig-2: Cell surface flow analysis of PD-L1 in CHO-PD-L1 transfected cell line using $0.5 \mu\text{g}/10^6$ cells of PD-L1 antibody (Clone: ABM5F25). Green represents isotype control; red represents anti-PD-L1 antibody. Goat anti-mouse PE conjugate was used as secondary antibody.

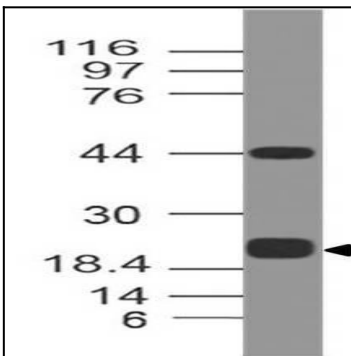


Fig-3: Western blot analysis of PDL1. Anti-PD-L1 antibody (Clone: ABM5F25) was tested at $0.5 \mu\text{g}/\text{ml}$ on Recombinant lysate.

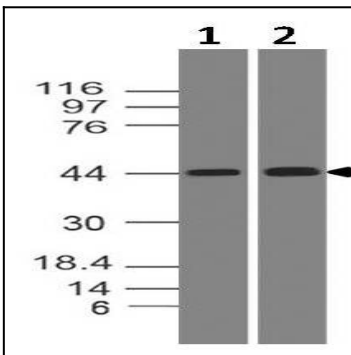


Fig-4: Western blot analysis of PDL1. Anti-PD-L1 antibody (Clone: ABM5F25) was tested at $2 \mu\text{g}/\text{ml}$ on (1) Daudi and (2) HepG2 lysates.

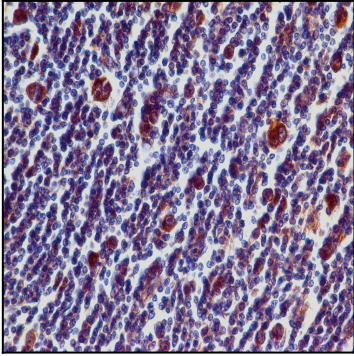


Fig-5: Immunohistochemical analysis of PD-L1 in Hodgkin's Lymphoma tissue using PD-L1 antibody (Clone: ABM5F25) at 5 μ g/ml.