

## 10-1035: Monoclonal antibody to RB1 (Clone: ABM17H9 )

<b>Clonality :</b>	Monoclonal
<b>Clone Name :</b>	ABM17H9
<b>Application :</b>	WB
<b>Reactivity :</b>	Human
<b>Gene :</b>	RB1
<b>Gene ID :</b>	5925
<b>Uniprot ID :</b>	P06400
<b>Format :</b>	Purified
<b>Alternative Name :</b>	p105-Rb, Retinoblastoma-associated protein, Rbpbp110, pRb
<b>Isotype :</b>	Mouse IgG1

### Product Info

<b>Amount :</b>	25 µg / 100 µg
<b>Purification :</b>	Protein G Chromatography
<b>Content :</b>	25 µg in 50 µl/100 µg in 200 µl PBS containing 0.05% BSA and 0.05% sodium azide. Sodium azide is highly toxic.
<b>Storage condition :</b>	Store the antibody at 4°C; stable for 6 months. For long-term storage; store at -20°C. Avoid repeated freeze and thaw cycles.

### Application Note

Western blot: 4-6 µg/ml

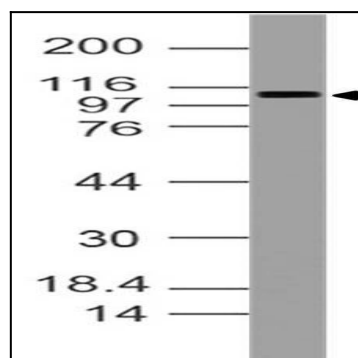


Figure-1: Western blot analysis of RB-1. Anti-RB-1 antibody (Clone: ABM17H9) was tested at 4 µg/ml on HeLa cell lysate.