

## 10-4047: Monoclonal Antibody to CADM1 (Clone: ABM2A73)

<b>Clonality :</b>	Monoclonal
<b>Clone Name :</b>	ABM2A73
<b>Application :</b>	FACS,WB
<b>Reactivity :</b>	Human
<b>Gene :</b>	CADM1
<b>Gene ID :</b>	23705
<b>Uniprot ID :</b>	Q9BY67
<b>Format :</b>	Purified
<b>Alternative Name :</b>	IGSF4, IGSF4A, NECL2, SYNCAM, TSLC1
<b>Isotype :</b>	Rat IgG1, kappa
<b>Immunogen Information :</b>	A partial length recombinant hCADM1 protein (amino acids 132-211) was used as the immunogen for this antibody.

### Product Info

<b>Amount :</b>	25 µg / 100 µg
<b>Purification :</b>	Protein G purification
<b>Content :</b>	100 µg in 200 µl PBS containing 0.05% BSA and 0.05% sodium azide. Sodium azide is highly toxic.
<b>Storage condition :</b>	Store the antibody at 4°C, stable for 6 months. For long-term storage, store at -20°C. Avoid repeated freeze and thaw cycles.

### Application Note

Western Blot analysis: 2-4 µg/ml, Flow Cytometry analysis: 0.5-1 µg/ 10<sup>6</sup> cells

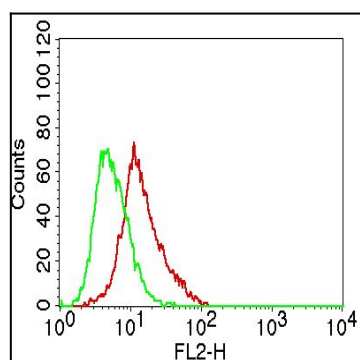


Figure-1: Intra cellular flowcytometry analysis of CADM1. Anti-CADM1 antibody (Clone: ABM2A73) was tested in A431 cells at 0.5 µg/10<sup>6</sup> cells. Green represents isotype control; red represents anti-CADM1 antibody. Goat anti-Rat PE conjugate was used as secondary antibody.

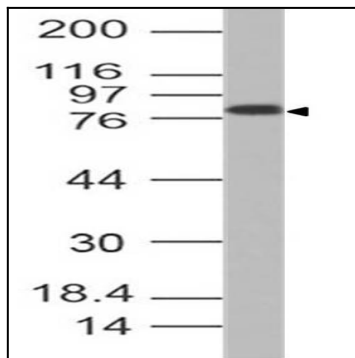


Figure-2: Western blot analysis of CADM1. Anti- CADM1 antibody (Clone: ABM2A73) was tested at 2  $\mu\text{g/ml}$  293 lysate.