

10-12543: Mouse Monoclonal Antibody to Mammaglobin(Clone :BS17)

Clonality :	Monoclonal
Clone Name :	BS17
Application :	IHC
Reactivity :	Human
Gene :	SCGB2A2
Gene ID :	4250
Uniprot ID :	Q13296
Alternative Name :	Mammaglobin-1, Secretoglobin family 2A member 2, MGB1, UGB2

Product Info

Amount :	0.1 ml / 0.5 ml
Content :	TRIS with 0.03% sodium azide, pH7.2
Storage condition :	Store at 4°C

Application Note

Immunohistochemical Analysis :-1:200

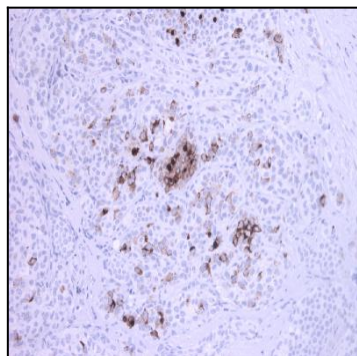


Figure-1: Breast Cancer section has been stained using Mammaglobin antibody (Clone: BS17).

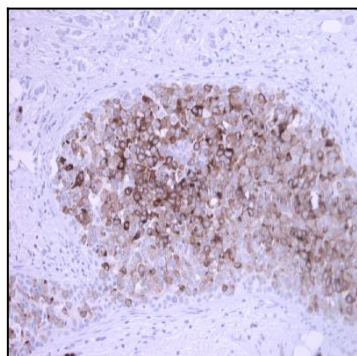


Figure-2: Breast Cancer section has been stained using Mammaglobin antibody (Clone: BS17).

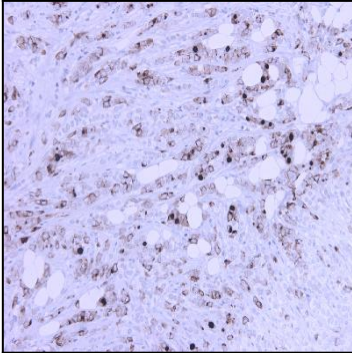


Figure-3: Breast Cancer section has been stained using Mammaglobin antibody (Clone: BS17).

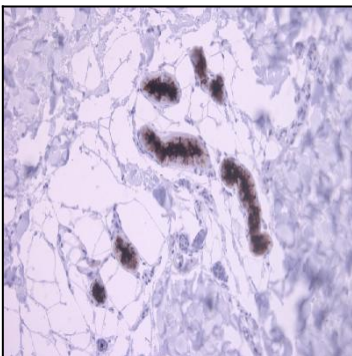


Figure-4: Skin sweat glands has been stained using Mammaglobin antibody (Clone: BS17).