

10-12536: Mouse Monoclonal Antibody to SYP(Clone :BS15)

Clonality :	Monoclonal
Clone Name :	BS15
Application :	IHC
Reactivity :	Human
Gene :	SYP
Gene ID :	6855
Uniprot ID :	P08247
Alternative Name :	Synaptophysin, Major synaptic vesicle protein p38
Isotype :	Mouse IgG1

Description

Synaptophysin (p38) is an integral membrane protein of small synaptic vesicles in brain and endocrine cells. Synaptophysin contains four transmembrane domains that form a hexameric channel or gap junction-like pore. Synaptophysin binds to the SNARE protein synaptobrevin/VAMP, which prevents the inclusion of synaptobrevin in the synaptic vesicle fusion complex and creates a pool of synaptobrevin for exocytosis when synapse activity increases. Synaptophysin is also responsible for targeting synaptobrevin 2/VAMP2 to synaptic vesicles, a critical component of the fusion complex.

Product Info

Amount :	0.1 ml / 0.5 ml
Content :	TRIS with 0.03% sodium azide, pH7.2
Storage condition :	Store at 4°C

Application Note

Immunohistochemical Analysis :-1:300

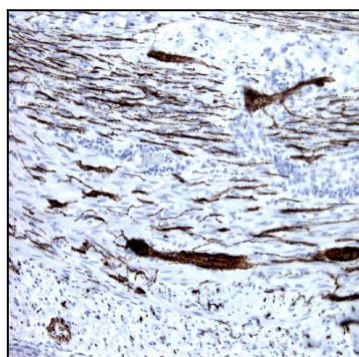


Figure-1: Appendix section has been stained using Synaptophysin antibody (Clone: BS15) with 1:300 dilution. Ganglion cells and neuronal axons stained strongly.

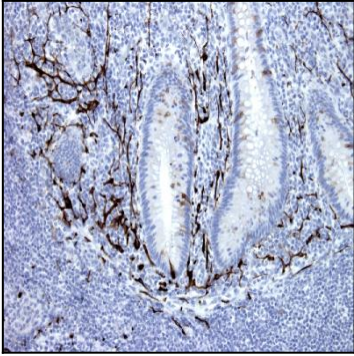


Figure-2: Appendix section has been stained using Synaptophysin antibody (Clone: BS15) with 1:300 dilution. Ganglion cells and neuronal axons stained strongly.

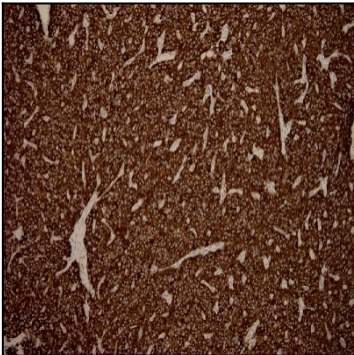


Figure-3: Neuro endocrine tumor section has been stained using Synaptophysin antibody (Clone: BS15) with 1:300 dilution. Neuroendocrine tumor cells have intensive staining reaction.